

UQCRC2 Rabbit pAb

Catalog No.: A4181 **6 Publications**

Basic Information

Observed MW

48kDa

Calculated MW

48kDa

Category

Primary antibody

Applications

ELISA, WB, IHC-P, IP

Cross-Reactivity

Human, Mouse, Rat

Background

The protein encoded by this gene is located in the mitochondrion, where it is part of the ubiquinol-cytochrome c reductase complex (also known as complex III). This complex constitutes a part of the mitochondrial respiratory chain. Defects in this gene are a cause of mitochondrial complex III deficiency nuclear type 5.

Recommended Dilutions

WB 1:500 - 1:2000

IHC-P 1:50 - 1:200

IP 0.5µg-4µg antibody for
200µg-400µg extracts of
whole cells

Immunogen Information

Gene ID

7385

Swiss Prot

P22695

Immunogen

Recombinant fusion protein containing a sequence corresponding to amino acids 224-453 of human UQCRC2 (NP_003357.2).

Synonyms

QCR2; UQCR2; MC3DN5; UQCRC2

Contact

 | www.abclonal.com

Product Information

Source

Rabbit

Isotype

IgG

Purification

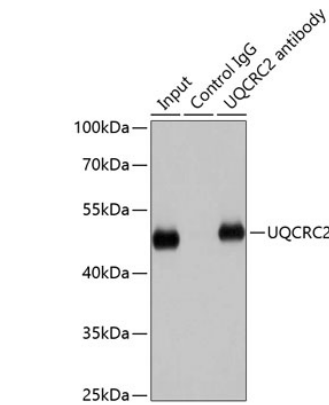
Affinity purification

Storage

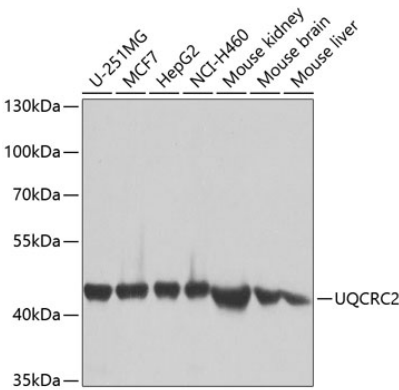
Store at -20°C. Avoid freeze / thaw cycles.

Buffer: PBS with 0.02% sodium azide, 50% glycerol, pH7.3.

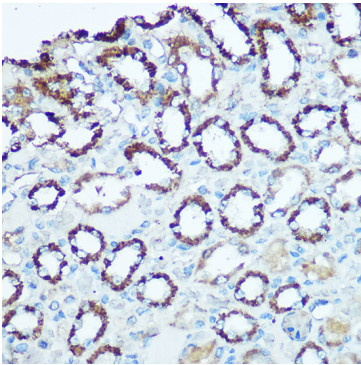
Validation Data



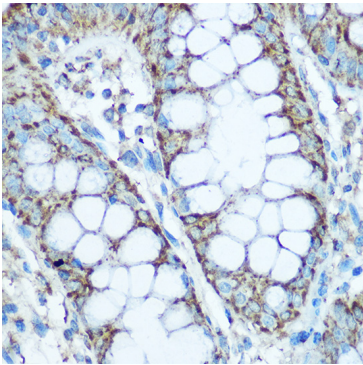
Immunoprecipitation analysis of 200 µg extracts of HepG2 cells using 1 µg UQCRC2 antibody (A4181). Western blot was performed from the immunoprecipitate using UQCRC2 antibody (A4181) at a dilution of 1:1000.



Western blot analysis of various lysates using UQCRC2 Rabbit pAb (A4181) at 1:1000 dilution. Secondary antibody: HRP Goat Anti-Rabbit IgG (H+L) (AS014) at 1:10000 dilution. Lysates/proteins: 25µg per lane. Blocking buffer: 3% nonfat dry milk in TBST. Detection: ECL Basic Kit (RM00020). Exposure time: 1s.



Immunohistochemistry analysis of UQCRC2 in paraffin-embedded rat kidney using UQCRC2 Rabbit pAb (A4181) at dilution of 1:100 (40x lens). Perform microwave antigen retrieval with 10 mM Tris/EDTA buffer pH 9.0 before commencing with IHC staining protocol.



Immunohistochemistry analysis of UQCRC2 in paraffin-embedded human colon using UQCRC2 Rabbit pAb (A4181) at dilution of 1:100 (40x lens). Perform microwave antigen retrieval with 10 mM Tris/EDTA buffer pH 9.0 before commencing with IHC staining protocol.