

A4176

Leader in Biomolecular Solutions for Life Science



## ESRRA Rabbit mAb

Catalog No.: A4176

Recombinant

1 Publications

### Basic Information

#### Observed MW

48-50kDa

#### Calculated MW

46kDa

#### Category

SMab Recombinant Monoclonal Antibody

#### Applications

WB, ELISA

#### Cross-Reactivity

Human, Mouse

#### CloneNo number

ARC0919

### Background

The protein encoded by this gene is a nuclear receptor that is most closely related to the estrogen receptor. This protein acts as a site-specific transcription factor and interacts with members of the PGC-1 family of transcription cofactors to regulate the expression of most genes involved in cellular energy production as well as in the process of mitochondrial biogenesis. A processed pseudogene of ESRRA is located on chromosome 13q12.1.

### Recommended Dilutions

WB 1:500 - 1:1000

### Immunogen Information

#### Gene ID

2101

#### Swiss Prot

P11474

#### Immunogen

A synthetic peptide corresponding to a sequence within amino acids 1-100 of human ESRRA (P11474).

#### Synonyms

ERR1; ERRa; ESRL1; NR3B1; ERRalpha; ESRRA

### Contact



[www.abclonal.com](http://www.abclonal.com)

### Product Information

#### Source

Rabbit

#### Isotype

IgG

#### Purification

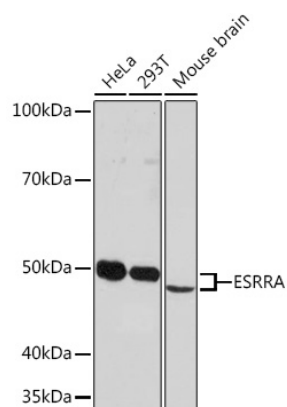
Affinity purification

#### Storage

Store at -20°C. Avoid freeze / thaw cycles.

Buffer: PBS with 0.02% sodium azide, 0.05% BSA, 50% glycerol, pH 7.3.

## Validation Data



Western blot analysis of extracts of various cell lines, using ESRRR Rabbit mAb (A4176) at 1:1000 dilution.  
Secondary antibody: HRP Goat Anti-Rabbit IgG (H+L) (A5014) at 1:10000 dilution.  
Lysates/proteins: 25µg per lane.  
Blocking buffer: 3% nonfat dry milk in TBST.  
Detection: ECL Enhanced Kit (RM00021).  
Exposure time: 3min.