

A4158

Leader in Biomolecular Solutions for Life Science



## TLN1 Rabbit pAb

Catalog No.: A4158

### Basic Information

#### Observed MW

240kDa

#### Calculated MW

270kDa

#### Category

Mouse Monoclonal Antibody

#### Applications

WB,IF/ICC,ELISA

#### Cross-Reactivity

Human,Mouse,Rat

### Background

This gene encodes a cytoskeletal protein that is concentrated in areas of cell-substratum and cell-cell contacts. The encoded protein plays a significant role in the assembly of actin filaments and in spreading and migration of various cell types, including fibroblasts and osteoclasts. It codistributes with integrins in the cell surface membrane in order to assist in the attachment of adherent cells to extracellular matrices and of lymphocytes to other cells. The N-terminus of this protein contains elements for localization to cell-extracellular matrix junctions. The C-terminus contains binding sites for proteins such as beta-1-integrin, actin, and vinculin.

### Recommended Dilutions

WB 1:500 - 1:2000

IF/ICC 1:50 - 1:200

### Immunogen Information

#### Gene ID

7094

#### Swiss Prot

Q9Y490

#### Immunogen

Recombinant fusion protein containing a sequence corresponding to amino acids 1-220 of human TLN1 (NP\_006280.3).

#### Synonyms

TLN; ILWEQ; talin-1; TLN1

### Contact



[www.abclonal.com](http://www.abclonal.com)

### Product Information

#### Source

Rabbit

#### Isotype

IgG

#### Purification

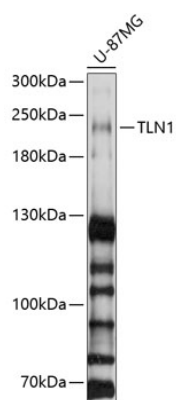
Affinity purification

#### Storage

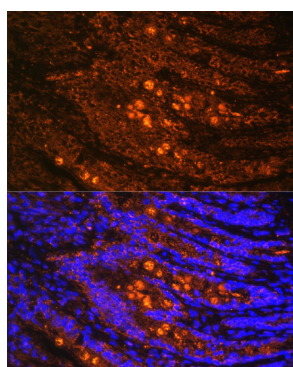
Store at -20°C. Avoid freeze / thaw cycles.

Buffer: PBS with 0.02% sodium azide,50% glycerol,pH7.3.

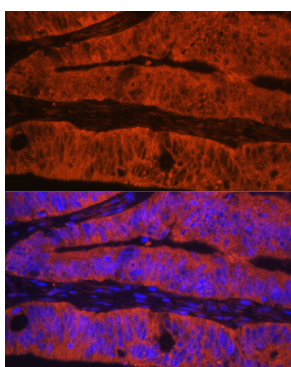
## Validation Data



Western blot analysis of extracts of U-87MG cells, using TLN1 antibody (A4158) at 1:1000 dilution.  
Secondary antibody: HRP Goat Anti-Rabbit IgG (H+L) (AS014) at 1:10000 dilution.  
Lysates/proteins: 25µg per lane.  
Blocking buffer: 3% nonfat dry milk in TBST.  
Detection: ECL Basic Kit (RM00020).  
Exposure time: 20s.



Immunofluorescence analysis of rat Intestine using TLN1 antibody (A4158) at dilution of 1:100. Blue: DAPI for nuclear staining.



Immunofluorescence analysis of human colon carcinoma using TLN1 antibody (A4158) at dilution of 1:100. Blue: DAPI for nuclear staining.