

A4156

Leader in Biomolecular Solutions for Life Science



ICAM5 Rabbit pAb

Catalog No.: A4156

1 Publications

Basic Information

Observed MW

115kDa

Calculated MW

97kDa

Category

Polyclonal Antibody

Applications

WB, ELISA

Cross-Reactivity

Human, Mouse, Rat

Background

The protein encoded by this gene is a member of the intercellular adhesion molecule (ICAM) family. All ICAM proteins are type I transmembrane glycoproteins, contain 2-9 immunoglobulin-like C2-type domains, and bind to the leukocyte adhesion LFA-1 protein. This protein is expressed on the surface of telencephalic neurons and displays two types of adhesion activity, homophilic binding between neurons and heterophilic binding between neurons and leukocytes. It may be a critical component in neuron-microglial cell interactions in the course of normal development or as part of neurodegenerative diseases.

Recommended Dilutions

WB 1:500 - 1:2000

Immunogen Information

Gene ID

7087

Swiss Prot

Q9UMF0

Immunogen

Recombinant fusion protein containing a sequence corresponding to amino acids 32-180 of human ICAM5 (NP_003250.3).

Synonyms

TLN; TLCN; ICAM5

Contact



www.abclonal.com

Product Information

Source

Rabbit

Isotype

IgG

Purification

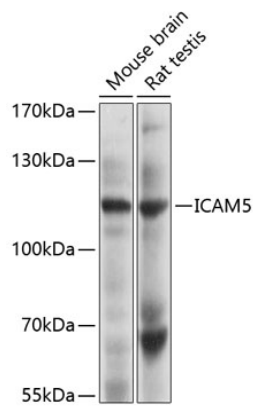
Affinity purification

Storage

Store at -20°C. Avoid freeze / thaw cycles.

Buffer: PBS with 0.02% sodium azide, 50% glycerol, pH 7.3.

Validation Data



Western blot analysis of various lysates using ICAM5 Rabbit pAb (A4156) at 1:1000 dilution.
Secondary antibody: HRP Goat Anti-Rabbit IgG (H+L) (AS014) at 1:10000 dilution.
Lysates/proteins: 25μg per lane.
Blocking buffer: 3% nonfat dry milk in TBST.
Detection: ECL Basic Kit (RM00020).
Exposure time: 30s.