

A4115

Leader in Biomolecular Solutions for Life Science



Lipoprotein lipase (LPL) Rabbit mAb

Catalog No.: A4115

Recombinant

2 Publications

Basic Information

Observed MW

53kDa

Calculated MW

53kDa

Category

SMab Recombinant Monoclonal Antibody

Applications

WB, ELISA

Cross-Reactivity

Human, Mouse

CloneNo number

ARC0904

Background

LPL encodes lipoprotein lipase, which is expressed in heart, muscle, and adipose tissue. LPL functions as a homodimer, and has the dual functions of triglyceride hydrolase and ligand/bridging factor for receptor-mediated lipoprotein uptake. Severe mutations that cause LPL deficiency result in type I hyperlipoproteinemia, while less extreme mutations in LPL are linked to many disorders of lipoprotein metabolism.

Recommended Dilutions

WB 1:500 - 1:2000

Immunogen Information

Gene ID

4023

Swiss Prot

P06858

Immunogen

A synthetic peptide corresponding to a sequence within amino acids 376-475 of human Lipoprotein lipase (LPL) (P06858).

Synonyms

LIPD; HDLCQ11; Lipoprotein lipase (LPL)

Contact



www.abclonal.com

Product Information

Source

Rabbit

Isotype

IgG

Purification

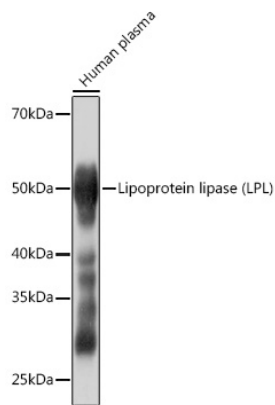
Affinity purification

Storage

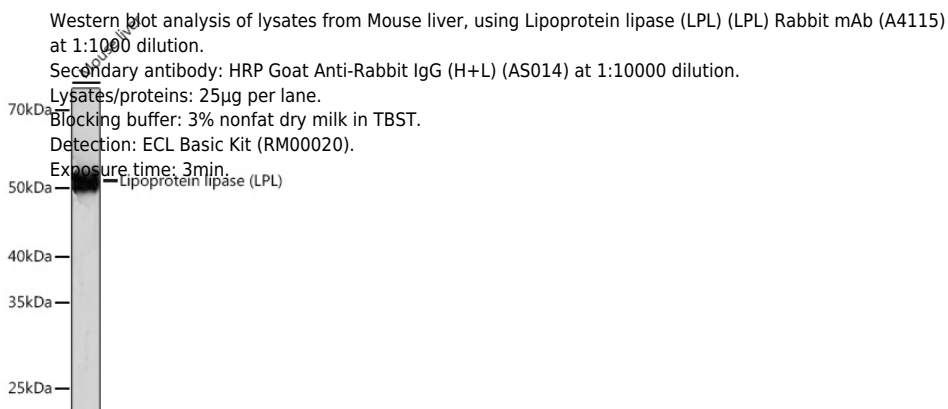
Store at -20°C. Avoid freeze / thaw cycles.

Buffer: PBS with 0.02% sodium azide, 0.05% BSA, 50% glycerol, pH 7.3.

Validation Data



Western blot analysis of lysates from Human plasma, using Lipoprotein lipase (LPL) (LPL) Rabbit mAb (A4115) at 1:1000 dilution.
Secondary antibody: HRP Goat Anti-Rabbit IgG (H+L) (AS014) at 1:10000 dilution.
Lysates/proteins: 25µg per lane.
Blocking buffer: 3% nonfat dry milk in TBST.
Detection: ECL Basic Kit (RM00020).
Exposure time: 3s.



Western blot analysis of lysates from Mouse liver, using Lipoprotein lipase (LPL) (LPL) Rabbit mAb (A4115) at 1:1000 dilution.
Secondary antibody: HRP Goat Anti-Rabbit IgG (H+L) (AS014) at 1:10000 dilution.
Lysates/proteins: 25µg per lane.
Blocking buffer: 3% nonfat dry milk in TBST.
Detection: ECL Basic Kit (RM00020).
Exposure time: 3min.