

A4078

Leader in Biomolecular Solutions for Life Science



RGS16 Rabbit pAb

Catalog No.: A4078

1 Publications

Basic Information

Observed MW

23kDa

Calculated MW

23kDa

Category

Polyclonal Antibody

Applications

WB, IHC-P, ELISA

Cross-Reactivity

Human, Mouse, Rat

Background

The protein encoded by this gene belongs to the 'regulator of G protein signaling' family. It inhibits signal transduction by increasing the GTPase activity of G protein alpha subunits. It also may play a role in regulating the kinetics of signaling in the phototransduction cascade.

Recommended Dilutions

| | |
|-------|----------------|
| WB | 1:200 - 1:2000 |
| IHC-P | 1:50 - 1:200 |

Immunogen Information

Gene ID

6004

Swiss Prot

O15492

Immunogen

Recombinant fusion protein containing a sequence corresponding to amino acids 1-202 of human RGS16 (NP_002919.3).

Synonyms

RGS-R; A28-RGS14; A28-RGS14P; RGS16

Contact



www.abclonal.com

Product Information

Source

Rabbit

Isotype

IgG

Purification

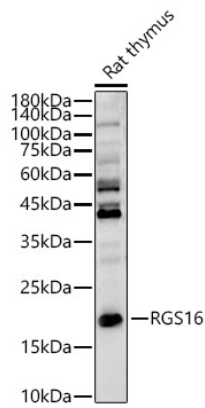
Affinity purification

Storage

Store at -20°C. Avoid freeze / thaw cycles.

Buffer: PBS with 0.02% sodium azide, 50% glycerol, pH 7.3.

Validation Data



Western blot analysis of Rat thymus, using RGS16 Rabbit pAb (A4078) at 1:1000 dilution.
Secondary antibody: HRP Goat Anti-Rabbit IgG (H+L) (AS014) at 1:10000 dilution.
Lysates/proteins: 25ug per lane.
Blocking buffer: 3% nonfat dry milk in TBST.
Detection: ECL Basic Kit (RM00020).
Exposure time: 30s.