

A4064

Leader in Biomolecular Solutions for Life Science



## SMMHC/MYH11 Rabbit mAb

Catalog No.: A4064

Recombinant

6 Publications

### Basic Information

#### Observed MW

250kDa

#### Calculated MW

227kDa

#### Category

SMab Recombinant Monoclonal Antibody

#### Applications

WB, IHC-P, IF/ICC, ELISA

#### Cross-Reactivity

Human, Mouse, Rat

#### CloneNo number

ARC51911

### Background

The protein encoded by this gene is a smooth muscle myosin belonging to the myosin heavy chain family. The gene product is a subunit of a hexameric protein that consists of two heavy chain subunits and two pairs of non-identical light chain subunits. It functions as a major contractile protein, converting chemical energy into mechanical energy through the hydrolysis of ATP. A chromosomal rearrangement involving this gene is associated with acute myeloid leukemia of the M4Eo subtype. Mutations in this gene are associated with visceral myopathy, megacystis-microcolon-intestinal hypoperistalsis syndrome 2, and familial thoracic aortic aneurysm 4.

### Recommended Dilutions

WB	1:500 - 1:1000
IHC-P	1:2000 - 1:10000
IF/ICC	1:500 - 1:1000

### Immunogen Information

#### Gene ID

4629

#### Swiss Prot

P35749

#### Immunogen

Recombinant fusion protein containing a sequence corresponding to amino acids 1160-1313 of human SMMHC/MYH11 (NP\_002465.1).

#### Synonyms

AAT4; FAA4; SMHC; SMMHC; VSCM2; SMMS-1; SMMHC/MYH11

### Contact



[www.abclonal.com](http://www.abclonal.com)

### Product Information

#### Source

Rabbit

#### Isotype

IgG

#### Purification

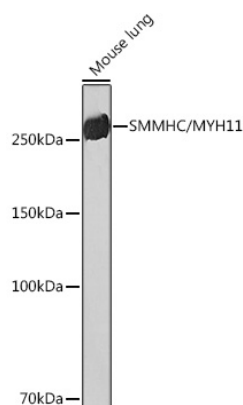
Affinity purification

#### Storage

Store at -20°C. Avoid freeze / thaw cycles.

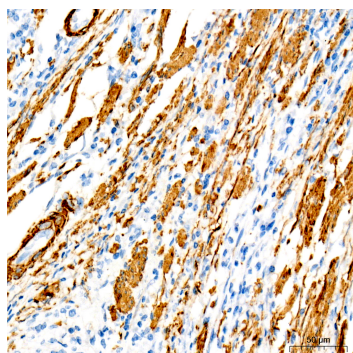
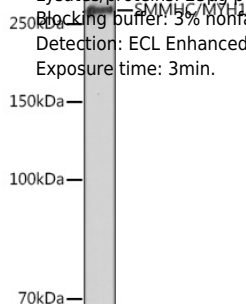
Buffer: PBS with 0.05% proclin300, 0.05% BSA, 50% glycerol, pH7.3.

## Validation Data

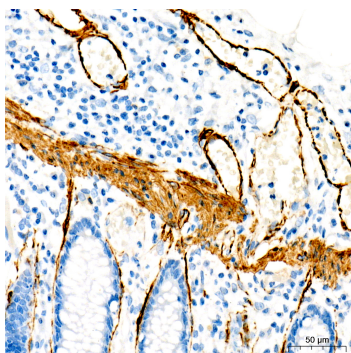


Western blot analysis of lysates from Mouse lung, using SMMHC/SMMHC/MYH11 Rabbit mAb (A4064) at 1:1000 dilution.  
 Secondary antibody: HRP Goat Anti-Rabbit IgG (H+L) (AS014) at 1:10000 dilution.  
 Lysates/proteins: 25µg per lane.  
 Blocking buffer: 3% nonfat dry milk in TBST.  
 Detection: ECL Basic Kit (RM00020).  
 Exposure time: 3min.

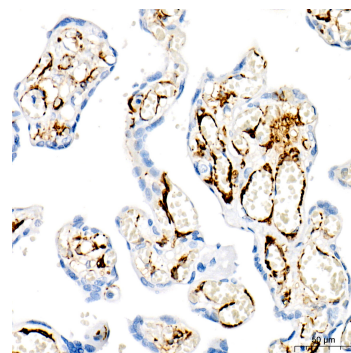
Western blot analysis of lysates from Rat lung, using SMMHC/SMMHC/MYH11 Rabbit mAb (A4064) at 1:1000 dilution.  
 Secondary antibody: HRP Goat Anti-Rabbit IgG (H+L) (AS014) at 1:10000 dilution.  
 Lysates/proteins: 25µg per lane.  
 Blocking buffer: 3% nonfat dry milk in TBST.  
 Detection: ECL Enhanced Kit (RM00021).  
 Exposure time: 3min.



Immunohistochemistry analysis of SMMHC/MYH11 in paraffin-embedded human colon carcinoma using SMMHC/MYH11 Rabbit mAb (A4064) at dilution of 1:8000 (40x lens). Perform high pressure antigen retrieval with 10 mM citrate buffer pH 6.0 before commencing with IHC staining protocol.

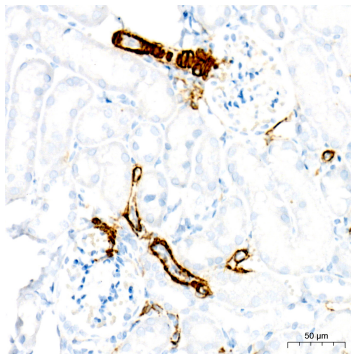


Immunohistochemistry analysis of SMMHC/MYH11 in paraffin-embedded human colon using SMMHC/MYH11 Rabbit mAb (A4064) at dilution of 1:8000 (40x lens). Perform high pressure antigen retrieval with 10 mM citrate buffer pH 6.0 before commencing with IHC staining protocol.

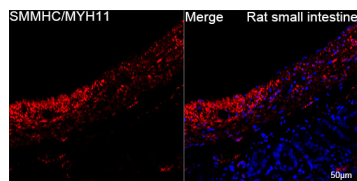


Immunohistochemistry analysis of SMMHC/MYH11 in paraffin-embedded human placenta using SMMHC/MYH11 Rabbit mAb (A4064) at dilution of 1:8000 (40x lens). Perform high pressure antigen retrieval with 10 mM citrate buffer pH 6.0 before commencing with IHC staining protocol.

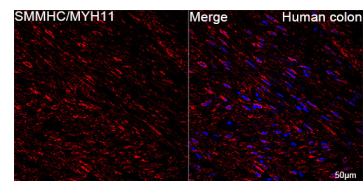
## Validation Data



Immunohistochemistry analysis of SMMHC/MYH11 in paraffin-embedded mouse kidney using SMMHC/MYH11 Rabbit mAb (A4064) at dilution of 1:8000 (40x lens). Perform high pressure antigen retrieval with 10 mM citrate buffer pH 6.0 before commencing with IHC staining protocol.



Confocal imaging of paraffin-embedded Rat small intestine using SMMHC/MYH11 Rabbit mAb (A4064, dilution 1:800) followed by a further incubation with Cy3 Goat Anti-Rabbit IgG (H+L) (AS007, dilution 1:500) (Red). DAPI was used for nuclear staining (Blue). Objective: 40x. Perform high pressure antigen retrieval with 0.01 M citRate buffer (pH 6.0) prior to IF staining.



Confocal imaging of paraffin-embedded Human colon using SMMHC/MYH11 Rabbit mAb (A4064, dilution 1:800) followed by a further incubation with Cy3 Goat Anti-Rabbit IgG (H+L) (AS007, dilution 1:500) (Red). DAPI was used for nuclear staining (Blue). Objective: 40x. Perform high pressure antigen retrieval with 0.01 M citRate buffer (pH 6.0) prior to IF staining.