

A3940

Leader in Biomolecular Solutions for Life Science



KRT81 Rabbit pAb

Catalog No.: A3940

1 Publications

Basic Information

Observed MW

55kDa

Calculated MW

55kDa

Category

Mouse Monoclonal Antibody

Applications

WB, ELISA

Cross-Reactivity

Human, Mouse

Background

The protein encoded by this gene is a member of the keratin gene family. As a type II hair keratin, it is a basic protein which heterodimerizes with type I keratins to form hair and nails. The type II hair keratins are clustered in a region of chromosome 12q13 and are grouped into two distinct subfamilies based on structure similarity. One subfamily, consisting of KRTHB1, KRTHB3, and KRTHB6, is highly related. The other less-related subfamily includes KRTHB2, KRTHB4, and KRTHB5. All hair keratins are expressed in the hair follicle; this hair keratin, as well as KRTHB3 and KRTHB6, is found primarily in the hair cortex. Mutations in this gene and KRTHB6 have been observed in patients with a rare dominant hair disease, monilethrix.

Recommended Dilutions

WB 1:500 - 1:1000

Immunogen Information

Gene ID

3887

Swiss Prot

Q14533

Immunogen

A synthetic peptide corresponding to a sequence within amino acids 350-450 of human KRT81 (NP_002272.2).

Synonyms

HB1; K81; Hb-1; KRTHB1; MLN137; ghHkb1; hHAKB2-1; KRT81

Contact



www.abclonal.com

Product Information

Source

Rabbit

Isotype

IgG

Purification

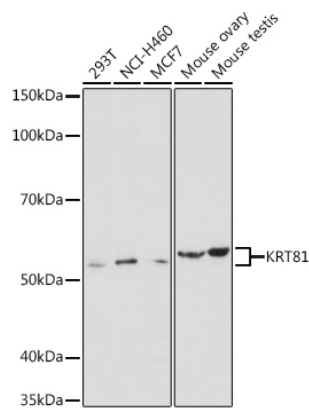
Affinity purification

Storage

Store at -20°C. Avoid freeze / thaw cycles.

Buffer: PBS with 0.01% thimerosal, 50% glycerol, pH 7.3.

Validation Data



Western blot analysis of various lysates using KRT81 Rabbit pAb (A3940) at 1:1000 dilution.
Secondary antibody: HRP Goat Anti-Rabbit IgG (H+L) (A5014) at 1:10000 dilution.
Lysates/proteins: 25µg per lane.
Blocking buffer: 3% nonfat dry milk in TBST.
Detection: ECL Basic Kit (RM00020).
Exposure time: 30s.