

A3898

Leader in Biomolecular Solutions for Life Science



ODC1 Rabbit mAb

Catalog No.: A3898

Recombinant

Basic Information

Observed MW

53kDa

Calculated MW

51kDa

Category

SMab Recombinant Monoclonal Antibody

Applications

WB, ELISA

Cross-Reactivity

Human

CloneNo number

ARC0863

Background

This gene encodes the rate-limiting enzyme of the polyamine biosynthesis pathway which catalyzes ornithine to putrescine. The activity level for the enzyme varies in response to growth-promoting stimuli and exhibits a high turnover rate in comparison to other mammalian proteins. Originally localized to both chromosomes 2 and 7, the gene encoding this enzyme has been determined to be located on 2p25, with a pseudogene located on 7q31-qter. Multiple alternatively spliced transcript variants encoding distinct isoforms have been identified.

Recommended Dilutions

WB 1:500 - 1:1000

Immunogen Information

Gene ID

4953

Swiss Prot

P11926

Immunogen

A synthetic peptide corresponding to a sequence within amino acids 1-100 of human ODC1 (P11926).

Synonyms

ODC; BABS; NEDBA; NEDBIA; ODC1

Contact



www.abclonal.com

Product Information

Source

Rabbit

Isotype

IgG

Purification

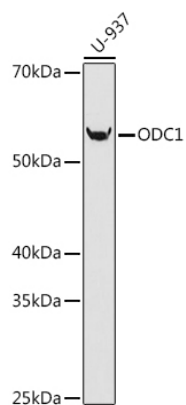
Affinity purification

Storage

Store at -20°C. Avoid freeze / thaw cycles.

Buffer: PBS with 0.02% sodium azide, 0.05% BSA, 50% glycerol, pH 7.3.

Validation Data



Western blot analysis of extracts of U-937 cells, using ODC1 antibody (A3898) at 1:1000 dilution.
Secondary antibody: HRP Goat Anti-Rabbit IgG (H+L) (A5014) at 1:10000 dilution.
Lysates/proteins: 25µg per lane.
Blocking buffer: 3% nonfat dry milk in TBST.
Detection: ECL Basic Kit (RM00020).
Exposure time: 90s.