

# ECHS1 Rabbit pAb

Catalog No.: A3845 **1 Publications**

## Basic Information

### Observed MW

31kDa

### Calculated MW

31kDa

### Category

Primary antibody

### Applications

ELISA, WB, IF/ICC

### Cross-Reactivity

Human, Mouse, Rat

## Background

The protein encoded by this gene functions in the second step of the mitochondrial fatty acid beta-oxidation pathway. It catalyzes the hydration of 2-trans-enoyl-coenzyme A (CoA) intermediates to L-3-hydroxyacyl-CoAs. The gene product is a member of the hydratase/isomerase superfamily. It localizes to the mitochondrial matrix. Transcript variants utilizing alternative transcription initiation sites have been described in the literature.

## Recommended Dilutions

<b>WB</b>	1:1000 - 1:2000
<b>IF/ICC</b>	1:50 - 1:200

## Immunogen Information

<b>Gene ID</b>	<b>Swiss Prot</b>
1892	P30084

### Immunogen

Recombinant fusion protein containing a sequence corresponding to amino acids 28-290 of human ECHS1 (NP\_004083.3).

### Synonyms

SCEH; mECH; mECH1; ECHS1D; ECHS1

## Contact

 | [www.abclonal.com](http://www.abclonal.com)

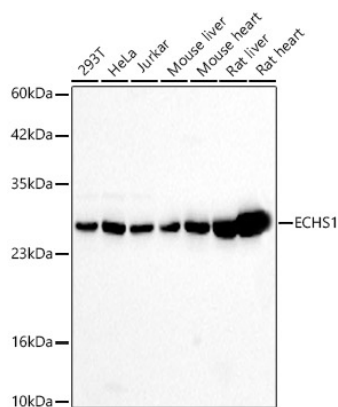
## Product Information

<b>Source</b>	<b>Isotype</b>	<b>Purification</b>
Rabbit	IgG	Affinity purification

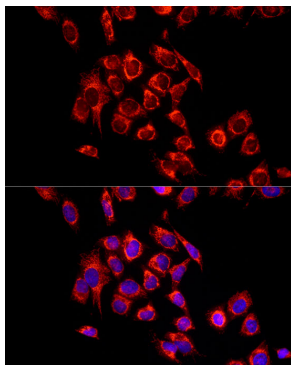
### Storage

Store at -20°C. Avoid freeze / thaw cycles.  
Buffer: PBS with 0.02% sodium azide, 50% glycerol, pH7.3.

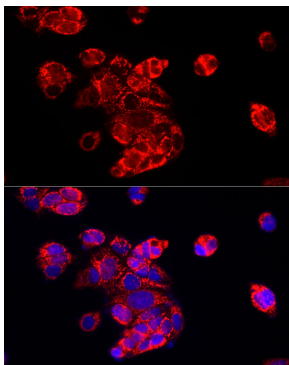
## Validation Data



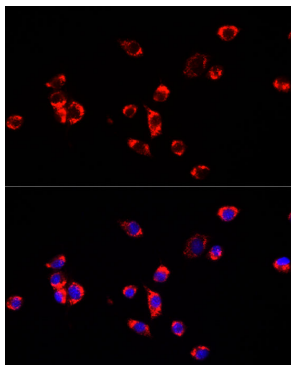
Western blot analysis of various lysates using ECHS1 Rabbit pAb (A3845) at 1:1000 dilution. Secondary antibody: HRP Goat Anti-Rabbit IgG (H+L)(AS014) at 1:10000 dilution. Lysates / proteins: 25 µg per lane. Blocking buffer: 3 % nonfat dry milk in TBST. Detection: ECL Basic Kit (RM00020). Exposure time: 30s.



Immunofluorescence analysis of HeLa cells using ECHS1 Rabbit pAb (A3845) at dilution of 1:100 (40x lens). Blue: DAPI for nuclear staining.



Immunofluorescence analysis of MCF7 cells using ECHS1 Rabbit pAb (A3845) at dilution of 1:100 (40x lens). Blue: DAPI for nuclear staining.



Immunofluorescence analysis of NIH/3T3 cells using ECHS1 Rabbit pAb (A3845) at dilution of 1:100 (40x lens). Blue: DAPI for nuclear staining.