

## BBS4 Rabbit pAb

Catalog No.: A3759

### Basic Information

**Observed MW**

53kDa

**Calculated MW**

58kDa

**Category**

Primary antibody

**Applications**

ELISA, WB

**Cross-Reactivity**

Human

### Background

This gene is a member of the Bardet-Biedl syndrome (BBS) gene family. Bardet-Biedl syndrome is an autosomal recessive disorder characterized by severe pigmentary retinopathy, obesity, polydactyly, renal malformation and cognitive disability. The proteins encoded by BBS gene family members are structurally diverse. The similar phenotypes exhibited by mutations in BBS gene family members are likely due to the protein's shared roles in cilia formation and function. Many BBS proteins localize to the basal bodies, ciliary axonemes, and pericentriolar regions of cells. BBS proteins may also be involved in intracellular trafficking via microtubule-related transport. The protein encoded by this gene has sequence similarity to O-linked N-acetylglucosamine (O-GlcNAc) transferases in plants and archaeobacteria and in human forms a multi-protein "BBSome" complex with seven other BBS proteins. Alternate splicing results in multiple transcript variants.

### Recommended Dilutions

**WB** 1:500 - 1:2000

### Immunogen Information

**Gene ID**

585

**Swiss Prot**

Q96RK4

**Immunogen**

Recombinant fusion protein containing a sequence corresponding to amino acids 350-519 of human BBS4 (NP\_149017.2).

**Synonyms**

BBS4

### Contact

 | [www.abclonal.com](http://www.abclonal.com)

### Product Information

**Source**

Rabbit

**Isotype**

IgG

**Purification**

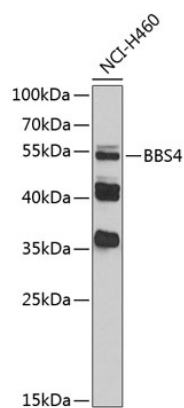
Affinity purification

**Storage**

Store at -20°C. Avoid freeze / thaw cycles.

Buffer: PBS with 0.02% sodium azide, 50% glycerol, pH 7.3.

# Validation Data



Western blot analysis of extracts of NCI-H460 cells, using BBS4 antibody (A3759) at 1:1000 dilution.  
Secondary antibody: HRP Goat Anti-Rabbit IgG (H+L) (A5014) at 1:10000 dilution.  
Lysates/proteins: 25µg per lane.  
Blocking buffer: 3% nonfat dry milk in TBST.  
Detection: ECL Basic Kit (RM00020).  
Exposure time: 30s.