

A3736

Leader in Biomolecular Solutions for Life Science



Desmin Rabbit mAb

Catalog No.: A3736

Recombinant

8 Publications

Basic Information

Observed MW

54kDa

Calculated MW

54kDa

Category

SMab Recombinant Monoclonal Antibody

Applications

WB, IHC-P, IF/ICC, ELISA

Cross-Reactivity

Human, Mouse, Rat

CloneNo number

ARC0235

Background

This gene encodes a muscle-specific class III intermediate filament. Homopolymers of this protein form a stable intracytoplasmic filamentous network connecting myofibrils to each other and to the plasma membrane. Mutations in this gene are associated with desmin-related myopathy, a familial cardiac and skeletal myopathy (CSM), and with distal myopathies.

Recommended Dilutions

WB	1:1000 - 1:5000
IHC-P	1:1000 - 1:5000
IF/ICC	1:50 - 1:200

Immunogen Information

Gene ID

1674

Swiss Prot

P17661

Immunogen

A synthetic peptide corresponding to a sequence within amino acids 371-470 of human Desmin (P17661).

Synonyms

CSM1; CSM2; CDCD3; LGMD1D; LGMD1E; LGMD2R; Desmin

Contact



www.abclonal.com

Product Information

Source

Rabbit

Isotype

IgG

Purification

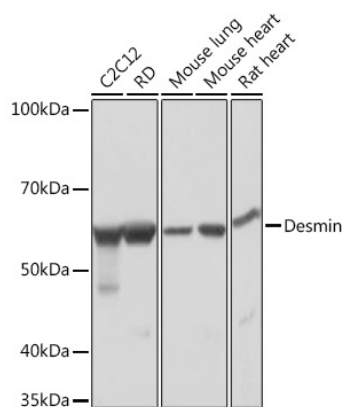
Affinity purification

Storage

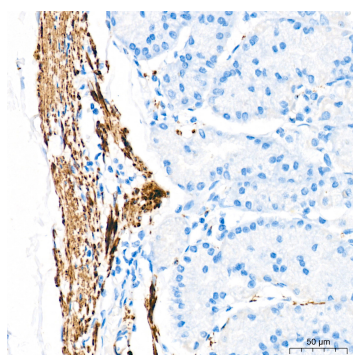
Store at -20°C. Avoid freeze / thaw cycles.

Buffer: PBS with 0.02% sodium azide, 0.05% BSA, 50% glycerol, pH7.3.

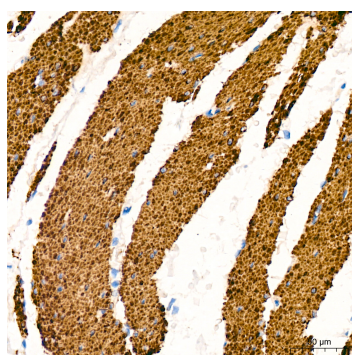
Validation Data



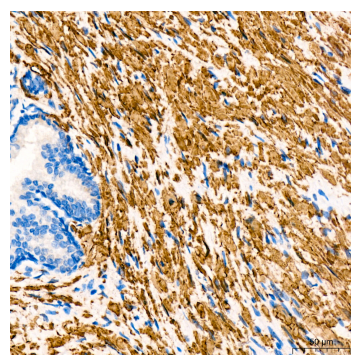
Western blot analysis of various lysates using Desmin Rabbit mAb (A3736) at 1:1000 dilution. Secondary antibody: HRP Goat Anti-Rabbit IgG (H+L) (A5014) at 1:10000 dilution. Lysates/proteins: 25µg per lane. Blocking buffer: 3% nonfat dry milk in TBST. Detection: ECL Basic Kit (RM00020). Exposure time: 1s.



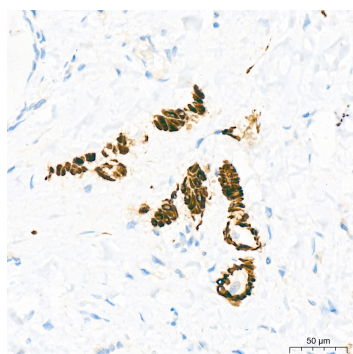
Immunohistochemistry analysis of Desmin in paraffin-embedded human stomach tissue using Desmin Rabbit mAb (A3736) at a dilution of 1:1600 (40x lens). High pressure antigen retrieval was performed with 0.01 M Tris-EDTA buffer (pH 9.0) prior to IHC staining.



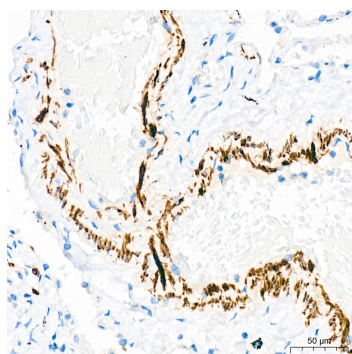
Immunohistochemistry analysis of Desmin in paraffin-embedded human smooth muscle tissue using Desmin Rabbit mAb (A3736) at a dilution of 1:1600 (40x lens). High pressure antigen retrieval was performed with 0.01 M Tris-EDTA buffer (pH 9.0) prior to IHC staining.



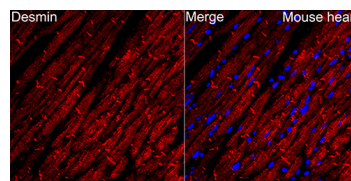
Immunohistochemistry analysis of Desmin in paraffin-embedded human prostate cancer tissue using Desmin Rabbit mAb (A3736) at a dilution of 1:1600 (40x lens). High pressure antigen retrieval was performed with 0.01 M Tris-EDTA buffer (pH 9.0) prior to IHC staining.



Immunohistochemistry analysis of Desmin in paraffin-embedded human thyroid tissue using Desmin Rabbit mAb (A3736) at a dilution of 1:1600 (40x lens). High pressure antigen retrieval was performed with 0.01 M Tris-EDTA buffer (pH 9.0) prior to IHC staining.

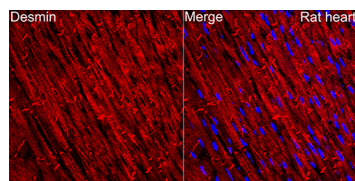


Immunohistochemistry analysis of Desmin in paraffin-embedded human lung tissue using Desmin Rabbit mAb (A3736) at a dilution of 1:1600 (40x lens). High pressure antigen retrieval was performed with 0.01 M Tris-EDTA buffer (pH 9.0) prior to IHC staining.



Immunofluorescence analysis of paraffin-embedded mouse heart using Desmin Rabbit mAb (A3736) at dilution of 1:100 (40x lens). Secondary antibody: Cy3 Goat Anti-Rabbit IgG (H+L) (A5007) at 1:500 dilution. Blue: DAPI for nuclear staining.

Validation Data



Immunofluorescence analysis of paraffin-embedded rat heart using Desmin Rabbit mAb (A3736) at dilution of 1:100 (40x lens). Secondary antibody: Cy3 Goat Anti-Rabbit IgG (H+L) (AS007) at 1:500 dilution. Blue: DAPI for nuclear staining.