

A3701

Leader in Biomolecular Solutions for Life Science



## [KO Validated] HIF1AN/FIH1 Rabbit mAb

Catalog No.: A3701 **KO** **Validated** **Recombinant**

### Basic Information

#### Observed MW

40kDa

#### Calculated MW

41kDa

#### Category

SMab Recombinant Monoclonal Antibody

#### Applications

WB, ELISA

#### Cross-Reactivity

Human

#### CloneNo number

ARC0826

### Background

Enables several functions, including 2-oxoglutarate-dependent dioxygenase activity; NF-kappaB binding activity; and transition metal ion binding activity. Involved in several processes, including negative regulation of Notch signaling pathway; negative regulation of transcription from RNA polymerase II promoter in response to hypoxia; and protein hydroxylation. Located in cytosol; nucleoplasm; and perinuclear region of cytoplasm. Colocalizes with nucleus.

### Recommended Dilutions

WB 1:500 - 1:2000

### Immunogen Information

#### Gene ID

55662

#### Swiss Prot

Q9NWT6

#### Immunogen

A synthetic peptide corresponding to a sequence within amino acids 1-100 of human HIF1AN/FIH1 (Q9NWT6).

#### Synonyms

FIH1; H1

### Contact



[www.abclonal.com](http://www.abclonal.com)

### Product Information

#### Source

Rabbit

#### Isotype

IgG

#### Purification

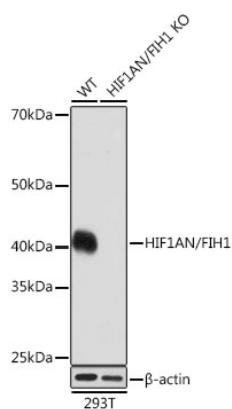
Affinity purification

#### Storage

Store at -20°C. Avoid freeze / thaw cycles.

Buffer: PBS with 0.02% sodium azide, 0.05% BSA, 50% glycerol, pH 7.3.

## Validation Data



Western blot analysis of extracts from wild type (WT) and HIF1AN/FIH1 knockout (KO) 293T cells, using HIF1AN/FIH1 antibody (A3701) at 1:1000 dilution.  
 Secondary antibody: HRP Goat Anti-Rabbit IgG (H+L) (AS014) at 1:10000 dilution.  
 Lysates/proteins: 25µg per lane.  
 Blocking buffer: 3% nonfat dry milk in TBST.  
 Detection: ECL Basic Kit (RM00020).  
 Exposure time: 3min.

Western blot analysis of extracts of U-87MG cells, using HIF1AN/FIH1 Rabbit mAb (A3701) at 1:1000 dilution.  
 Secondary antibody: HRP Goat Anti-Rabbit IgG (H+L) (AS014) at 1:10000 dilution.  
 Lysates/proteins: 25µg per lane.  
 Blocking buffer: 3% nonfat dry milk in TBST.  
 Detection: ECL Basic Kit (RM00020).  
 Exposure time: 3min.

