

A3588

Leader in Biomolecular Solutions for Life Science



[KD Validated] STAT2 Rabbit mAb

Catalog No.: A3588

Recombinant

5 Publications

Basic Information

Observed MW

97kDa/113kDa

Calculated MW

98kDa

Category

SMab Recombinant Monoclonal Antibody

Applications

WB, ELISA

Cross-Reactivity

Human, Rat

CloneNo number

ARC51796

Background

The protein encoded by this gene is a member of the STAT protein family. In response to cytokines and growth factors, STAT family members are phosphorylated by the receptor associated kinases, and then form homo- or heterodimers that translocate to the cell nucleus where they act as transcription activators. In response to interferon (IFN), this protein forms a complex with STAT1 and IFN regulatory factor family protein p48 (ISGF3G), in which this protein acts as a transactivator, but lacks the ability to bind DNA directly. The protein mediates innate antiviral activity. Mutations in this gene result in Immunodeficiency 44.

Recommended Dilutions

WB 1:500 - 1:1000

Immunogen Information

Gene ID

6773

Swiss Prot

P52630

Immunogen

Recombinant fusion protein containing a sequence corresponding to amino acids 550-706 of human STAT2 (NP_005410.1).

Synonyms

P113; IMD44; ISGF-3; PTORCH3; STAT113; [KD Validated] STAT2

Contact



www.abclonal.com

Product Information

Source

Rabbit

Isotype

IgG

Purification

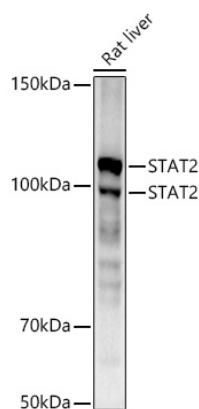
Affinity purification

Storage

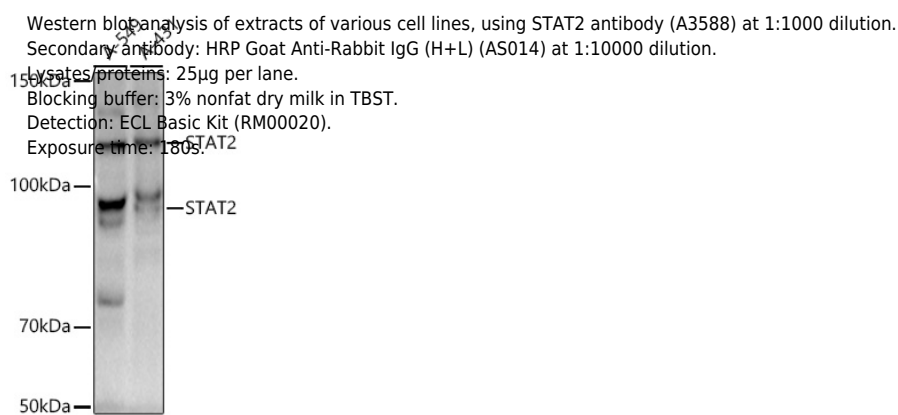
Store at -20°C. Avoid freeze / thaw cycles.

Buffer: PBS with 0.05% proclin300, 0.05% BSA, 50% glycerol, pH7.3.

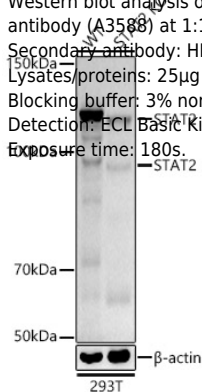
Validation Data



Western blot analysis of extracts of Rat liver, using STAT2 antibody (A3588) at 1:1000 dilution.
Secondary antibody: HRP Goat Anti-Rabbit IgG (H+L) (A5014) at 1:10000 dilution.
Lysates/proteins: 25µg per lane.
Blocking buffer: 3% nonfat dry milk in TBST.
Detection: ECL Basic Kit (RM00020).
Exposure time: 60s.



Western blot analysis of extracts of various cell lines, using STAT2 antibody (A3588) at 1:1000 dilution.
Secondary antibody: HRP Goat Anti-Rabbit IgG (H+L) (A5014) at 1:10000 dilution.
Lysates/proteins: 25µg per lane.
Blocking buffer: 3% nonfat dry milk in TBST.
Detection: ECL Basic Kit (RM00020).
Exposure time: 180s.



Western blot analysis of extracts from wild type (WT) and STAT2 knockdown (KD) 293T cells, using STAT2 antibody (A3568) at 1:1000 dilution.
Secondary antibody: HRP Goat Anti-Rabbit IgG (H+L) (AS014) at 1:10000 dilution.
Lysates/proteins: 25µg per lane.
Blocking buffer: 3% nonfat dry milk in TBST.
Detection: ECL Basic Kit (RM00020).
Exposure time: 180s.