

A3524

Leader in Biomolecular Solutions for Life Science



## IL13RA1 Rabbit mAb

Catalog No.: A3524 **Recombinant**

### Basic Information

**Observed MW**

49kDa

**Calculated MW**

49kDa

**Category**

SMab Recombinant Monoclonal Antibody

**Applications**

WB, IHC-P, ELISA

**Cross-Reactivity**

Human

**CloneNo number**

ARC2027

### Background

The protein encoded by this gene is a subunit of the interleukin 13 receptor. This subunit forms a receptor complex with IL4 receptor alpha, a subunit shared by IL13 and IL4 receptors. This subunit serves as a primary IL13-binding subunit of the IL13 receptor, and may also be a component of IL4 receptors. This protein has been shown to bind tyrosine kinase TYK2, and thus may mediate the signaling processes that lead to the activation of JAK1, STAT3 and STAT6 induced by IL13 and IL4.

### Recommended Dilutions

|              |                |
|--------------|----------------|
| <b>WB</b>    | 1:500 - 1:1000 |
| <b>IHC-P</b> | 1:50 - 1:200   |

### Immunogen Information

**Gene ID**

3597

**Swiss Prot**

P78552

**Immunogen**

A synthetic peptide corresponding to a sequence within amino acids 1-100 of human IL13RA1 (P78552).

**Synonyms**

NR4; CT19; CD213A1; IL-13Ra; IL13RA1

### Contact



[www.abclonal.com](http://www.abclonal.com)

### Product Information

**Source**

Rabbit

**Isotype**

IgG

**Purification**

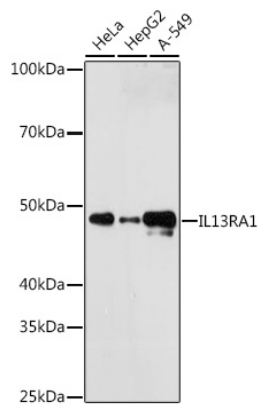
Affinity purification

**Storage**

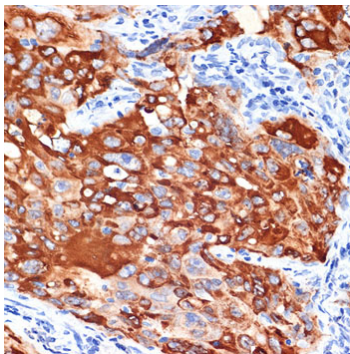
Store at -20°C. Avoid freeze / thaw cycles.

Buffer: PBS with 0.02% sodium azide, 0.05% BSA, 50% glycerol, pH7.3.

## Validation Data



Western blot analysis of extracts of various cell lines, using IL13RA1 antibody (A3524) at 1:1000 dilution.  
Secondary antibody: HRP Goat Anti-Rabbit IgG (H+L) (A5014) at 1:10000 dilution.  
Lysates/proteins: 25µg per lane.  
Blocking buffer: 3% nonfat dry milk in TBST.  
Detection: ECL Enhanced Kit (RM00021).  
Exposure time: 180s.



Immunohistochemistry analysis of paraffin-embedded human lung cancer using IL13RA1 Rabbit mAb (A3524) at dilution of 1:100 (40x lens). Perform microwave antigen retrieval with 10 mM Tris/EDTA buffer pH 9.0 before commencing with IHC staining protocol.