

A3461

Leader in Biomolecular Solutions for Life Science



## S100A6 Rabbit mAb

Catalog No.: A3461

Recombinant

1 Publications

### Basic Information

#### Observed MW

10kDa

#### Calculated MW

10kDa

#### Category

SMab Recombinant Monoclonal Antibody

#### Applications

WB, IHC-P, IF/ICC, ELISA

#### Cross-Reactivity

Human, Mouse, Rat

#### CloneNo number

ARC2005

### Background

The protein encoded by this gene is a member of the S100 family of proteins containing 2 EF-hand calcium-binding motifs. S100 proteins are localized in the cytoplasm and/or nucleus of a wide range of cells, and involved in the regulation of a number of cellular processes such as cell cycle progression and differentiation. S100 genes include at least 13 members which are located as a cluster on chromosome 1q21. This protein may function in stimulation of Ca<sup>2+</sup>-dependent insulin release, stimulation of prolactin secretion, and exocytosis. Chromosomal rearrangements and altered expression of this gene have been implicated in melanoma.

### Recommended Dilutions

WB	1:500 - 1:2000
IHC-P	1:50 - 1:200
IF/ICC	1:100 - 1:500

### Immunogen Information

#### Gene ID

6277

#### Swiss Prot

P06703

#### Immunogen

Recombinant fusion protein containing a sequence corresponding to amino acids 1-90 of human S100A6 (P06703).

#### Synonyms

2A9; PRA; 5B10; CABP; CACY; S10A6; S100A6

### Contact



[www.abclonal.com](http://www.abclonal.com)

### Product Information

#### Source

Rabbit

#### Isotype

IgG

#### Purification

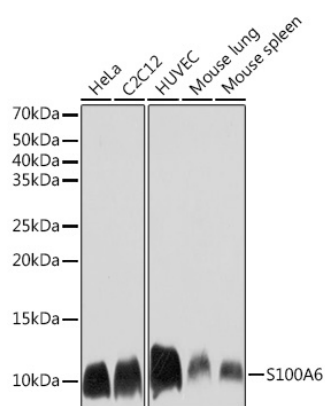
Affinity purification

#### Storage

Store at -20°C. Avoid freeze / thaw cycles.

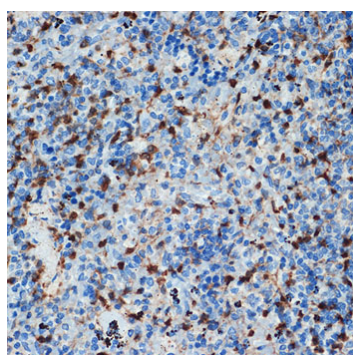
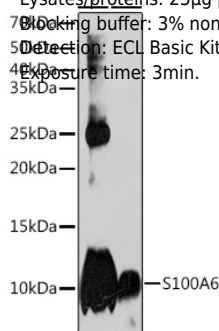
Buffer: PBS with 0.02% sodium azide, 0.05% BSA, 50% glycerol, pH7.3.

## Validation Data

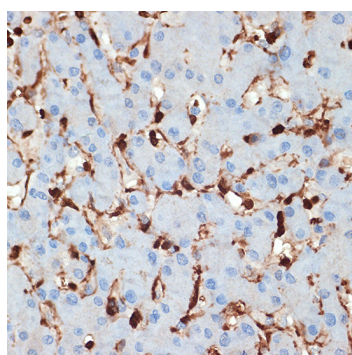


Western blot analysis of various lysates using S100A6 Rabbit mAb (A3461) at 1:1000 dilution.  
Secondary antibody: HRP Goat Anti-Rabbit IgG (H+L) (AS014) at 1:10000 dilution.  
Lysates/proteins: 25µg per lane.  
Blocking buffer: 3% nonfat dry milk in TBST.  
Detection: ECL Basic Kit (RM00020).  
Exposure time: 30s.

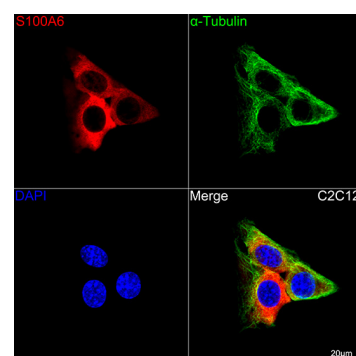
Western blot analysis of various lysates using S100A6 Rabbit mAb (A3461) at 1:1000 dilution.  
Secondary antibody: HRP Goat Anti-Rabbit IgG (H+L) (AS014) at 1:10000 dilution.  
Lysates/proteins: 25µg per lane.  
Blocking buffer: 3% nonfat dry milk in TBST.  
Detection: ECL Basic Kit (RM00020).  
Exposure time: 3min.



Immunohistochemistry analysis of S100A6 in paraffin-embedded rat spleen using S100A6 Rabbit mAb (A3461) at dilution of 1:100 (40x lens). Perform microwave antigen retrieval with 10 mM Tris/EDTA buffer pH 9.0 before commencing with IHC staining protocol.



Immunohistochemistry analysis of S100A6 in paraffin-embedded human liver using S100A6 Rabbit mAb (A3461) at dilution of 1:100 (40x lens). Perform microwave antigen retrieval with 10 mM Tris/EDTA buffer pH 9.0 before commencing with IHC staining protocol.



Confocal imaging of C2C12 cells using S100A6 Rabbit mAb (A3461, dilution 1:400) followed by a further incubation with Cy3 Goat Anti-Rabbit IgG (H+L) (AS007, dilution 1:500) (Red). The cells were counterstained with α-Tubulin Mouse mAb (AC012, dilution 1:400) followed by incubation with ABflo® 488-conjugated Goat Anti-Mouse IgG (H+L) Ab (AS076, dilution 1:500) (Green). DAPI was used for nuclear staining (Blue). Objective: 100x.