

A3430

Leader in Biomolecular Solutions for Life Science



Phospholipid Scramblase 1 (PLSCR1) Rabbit mAb

Catalog No.: A3430

Recombinant

Basic Information

Observed MW

35kDa

Calculated MW

35kDa

Category

SMab Recombinant Monoclonal Antibody

Applications

WB,IHC-P,IF/ICC,ELISA

Cross-Reactivity

Human,Mouse,Rat

CloneNo number

ARC2028

Background

This gene encodes a phospholipid scramblase family member. The encoded protein is involved in disruption of the asymmetrical distribution of phospholipids between the inner and outer leaflets of the plasma membrane, resulting in externalization of phosphatidylserine. This cell membrane disruption plays an important role in the blood coagulation cascade as well as macrophage clearing of apoptotic cells. The encoded protein has additionally been implicated in gene regulation and interferon-induced antiviral responses.

Recommended Dilutions

| | |
|--------|----------------|
| WB | 1:500 - 1:1000 |
| IHC-P | 1:50 - 1:200 |
| IF/ICC | 1:50 - 1:200 |

Immunogen Information

| | |
|---------|------------|
| Gene ID | Swiss Prot |
| 5359 | 015162 |

Immunogen

A synthetic peptide corresponding to a sequence within amino acids 1-100 of human Phospholipid Scramblase 1 (PLSCR1) (NP_066928.1).

Synonyms

MMTRA1B; Phospholipid Scramblase 1 (PLSCR1)

Contact



www.abclonal.com

Product Information

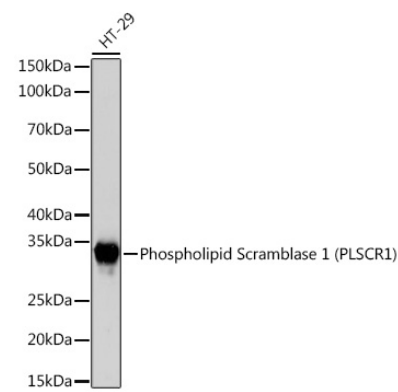
| | | |
|--------|---------|-----------------------|
| Source | Isotype | Purification |
| Rabbit | IgG | Affinity purification |

Storage

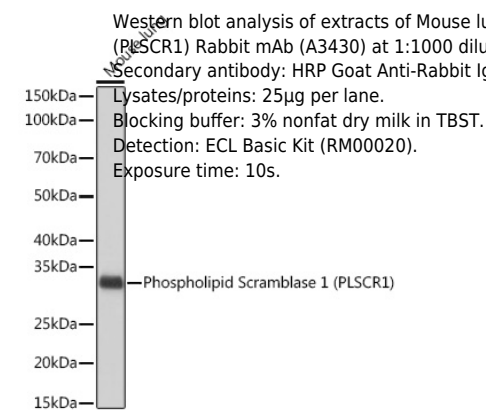
Store at -20°C. Avoid freeze / thaw cycles.

Buffer: PBS with 0.02% sodium azide,0.05% BSA,50% glycerol,pH7.3.

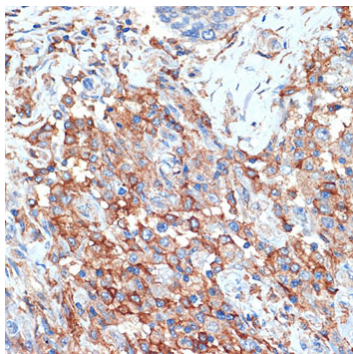
Validation Data



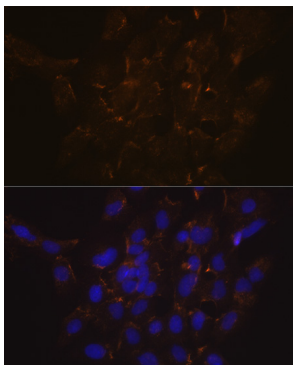
Western blot analysis of extracts of HT-29 cells, using Phospholipid Phospholipid Scramblase 1 (PLSCR1) (PLSCR1) Rabbit mAb (A3430) at 1:1000 dilution.
Secondary antibody: HRP Goat Anti-Rabbit IgG (H+L) (AS014) at 1:10000 dilution.
Lysates/proteins: 25µg per lane.
Blocking buffer: 3% nonfat dry milk in TBST.
Detection: ECL Basic Kit (RM00020).
Exposure time: 3s.



Western blot analysis of extracts of Mouse lung, using Phospholipid Phospholipid Scramblase 1 (PLSCR1) (PLSCR1) Rabbit mAb (A3430) at 1:1000 dilution.
Secondary antibody: HRP Goat Anti-Rabbit IgG (H+L) (AS014) at 1:10000 dilution.
Lysates/proteins: 25µg per lane.
Blocking buffer: 3% nonfat dry milk in TBST.
Detection: ECL Basic Kit (RM00020).
Exposure time: 10s.



Immunohistochemistry analysis of paraffin-embedded human breast cancer using Phospholipid Phospholipid Scramblase 1 (PLSCR1) (PLSCR1) Rabbit mAb (A3430) at dilution of 1:100 (40x lens). Perform microwave antigen retrieval with 10 mM Tris/EDTA buffer pH 9.0 before commencing with IHC staining protocol.



Immunofluorescence analysis of C6 cells using Phospholipid Phospholipid Scramblase 1 (PLSCR1) (PLSCR1) Rabbit mAb (A3430) at dilution of 1:100 (40x lens). Blue: DAPI for nuclear staining.