

A3407

Leader in Biomolecular Solutions for Life Science



# Thyroglobulin Rabbit mAb

Catalog No.: A3407 **Recombinant**

## Basic Information

### Observed MW

**Calculated MW**  
305kDa

### Category

SMab Recombinant Monoclonal Antibody

### Applications

IHC-P,IF/ICC,ELISA

### Cross-Reactivity

Human,Mouse,Rat

### CloneNo number

ARC1971

## Background

Thyroglobulin (Tg) is a glycoprotein homodimer produced predominantly by the thyroid gland. It acts as a substrate for the synthesis of thyroxine and triiodothyronine as well as the storage of the inactive forms of thyroid hormone and iodine. Thyroglobulin is secreted from the endoplasmic reticulum to its site of iodination, and subsequent thyroxine biosynthesis, in the follicular lumen. Mutations in this gene cause thyroid dysmorphogenesis, manifested as goiter, and are associated with moderate to severe congenital hypothyroidism. Polymorphisms in this gene are associated with susceptibility to autoimmune thyroid diseases (AITD) such as Graves disease and Hashimoto thyroiditis.

## Recommended Dilutions

IHC-P	1:50 - 1:200
IF/ICC	1:50 - 1:200

## Immunogen Information

<b>Gene ID</b>	<b>Swiss Prot</b>
7038	P01266

### Immunogen

A synthetic peptide corresponding to a sequence within amino acids 1000-1100 of human Thyroglobulin (P01266).

### Synonyms

TGN; AITD3; Thyroglobulin

## Contact



[www.abclonal.com](http://www.abclonal.com)

## Product Information

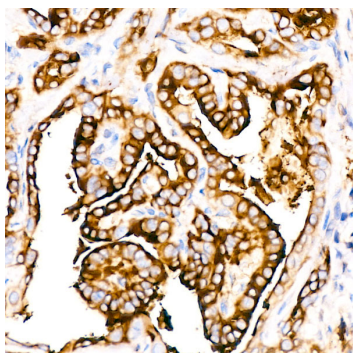
<b>Source</b>	<b>Isotype</b>	<b>Purification</b>
Rabbit	IgG	Affinity purification

### Storage

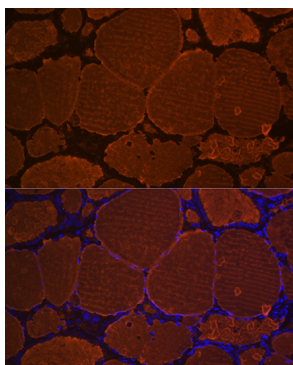
Store at -20°C. Avoid freeze / thaw cycles.

Buffer: PBS with 0.02% sodium azide,0.05% BSA,50% glycerol,pH7.3.

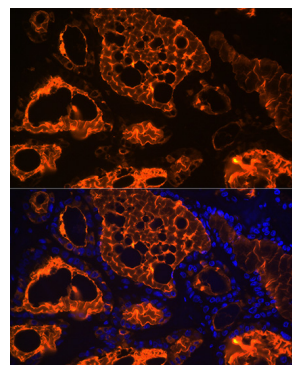
## Validation Data



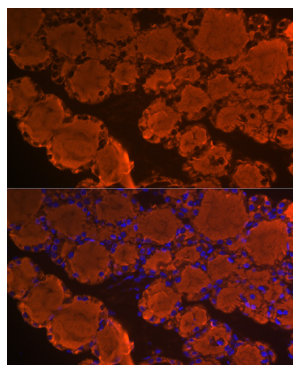
Immunohistochemistry analysis of Thyroglobulin in paraffin-embedded human thyroid cancer using Thyroglobulin Rabbit mAb (A3407) at dilution of 1:100 (40x lens). Perform high pressure antigen retrieval with 10 mM citrate buffer pH 6.0 before commencing with IHC staining protocol.



Immunofluorescence analysis of paraffin-embedded rat thyroid using Thyroglobulin Rabbit mAb (A3407) at dilution of 1:100 (40x lens). Secondary antibody: Cy3 Goat Anti-Rabbit IgG (H+L) (AS007) at 1:500 dilution. Blue: DAPI for nuclear staining.



Immunofluorescence analysis of paraffin-embedded human thyroid using Thyroglobulin Rabbit mAb (A3407) at dilution of 1:100 (40x lens). Secondary antibody: Cy3 Goat Anti-Rabbit IgG (H+L) (AS007) at 1:500 dilution. Blue: DAPI for nuclear staining.



Immunofluorescence analysis of paraffin-embedded mouse thyroid using Thyroglobulin Rabbit mAb (A3407) at dilution of 1:100 (40x lens). Secondary antibody: Cy3 Goat Anti-Rabbit IgG (H+L) (AS007) at 1:500 dilution. Blue: DAPI for nuclear staining.