

A3356

Leader in Biomolecular Solutions for Life Science



AIM2 Rabbit pAb

Catalog No.: A3356

3 Publications

Basic Information

Observed MW

39kDa

Calculated MW

39kDa

Category

Mouse Monoclonal Antibody

Applications

WB,IF/ICC,ELISA

Cross-Reactivity

Human,Mouse,Rat

Background

AIM2 is a member of the IFI202X /IFI16 family. It plays a putative role in tumorigenic reversion and may control cell proliferation. Interferon-gamma induces expression of AIM2.

Recommended Dilutions

WB	1:500 - 1:1000
IF/ICC	1:50 - 1:200

Immunogen Information

Gene ID

9447

Swiss Prot

O14862

Immunogen

A synthetic peptide corresponding to a sequence within amino acids 130-337 of human AIM2 (NP_004824.1).

Synonyms

PYHIN4; AIM2

Contact



www.abclonal.com

Product Information

Source

Rabbit

Isotype

IgG

Purification

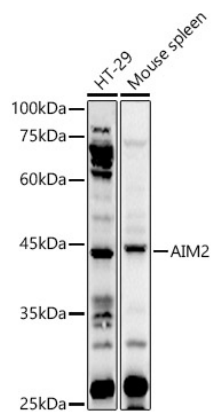
Affinity purification

Storage

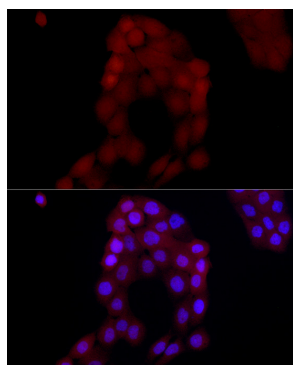
Store at -20°C. Avoid freeze / thaw cycles.

Buffer: PBS with 0.05% proclin300,50% glycerol,pH7.3.

Validation Data



Western blot analysis of extracts of various cell lines, using AIM2 antibody (A3356) at 1:1000 dilution.
Secondary antibody: HRP Goat Anti-Rabbit IgG (H+L) (A5014) at 1:10000 dilution.
Lysates/proteins: 25µg per lane.
Blocking buffer: 3% nonfat dry milk in TBST.
Detection: ECL Basic Kit (RM00020).
Exposure time: 30s.



Immunofluorescence analysis of A-431 cells using AIM2 Rabbit pAb (A3356) at dilution of 1:50 (40x lens). Blue: DAPI for nuclear staining.