

A3355

Leader in Biomolecular Solutions for Life Science



## LSP1 Rabbit mAb

Catalog No.: A3355 **Recombinant**

### Basic Information

**Observed MW**

47kDa

**Calculated MW**

37kDa

**Category**

SMab Recombinant Monoclonal Antibody

**Applications**

WB,IF/ICC,ELISA

**Cross-Reactivity**

Human,Mouse,Rat

**CloneNo number**

ARC1952

### Background

This gene encodes an intracellular F-actin binding protein. The protein is expressed in lymphocytes, neutrophils, macrophages, and endothelium and may regulate neutrophil motility, adhesion to fibrinogen matrix proteins, and transendothelial migration. Alternative splicing results in multiple transcript variants encoding different isoforms.

### Recommended Dilutions

**WB** 1:500 - 1:2000

**IF/ICC** 1:50 - 1:200

### Immunogen Information

**Gene ID**

4046

**Swiss Prot**

P33241

**Immunogen**

A synthetic peptide corresponding to a sequence within amino acids 240-339 of human LSP1 (P33241).

**Synonyms**

WP34; pp52; LSP1

### Contact



[www.abclonal.com](http://www.abclonal.com)

### Product Information

**Source**

Rabbit

**Isotype**

IgG

**Purification**

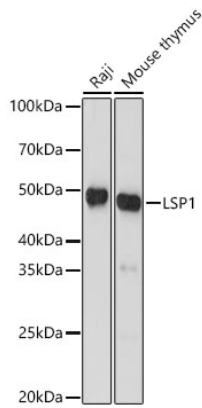
Affinity purification

**Storage**

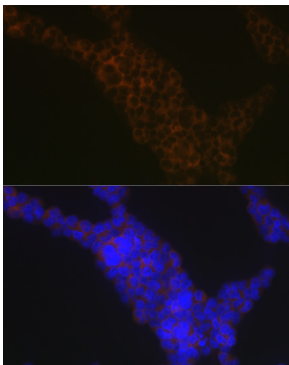
Store at -20°C. Avoid freeze / thaw cycles.

Buffer: PBS with 0.02% sodium azide,0.05% BSA,50% glycerol,pH7.3.

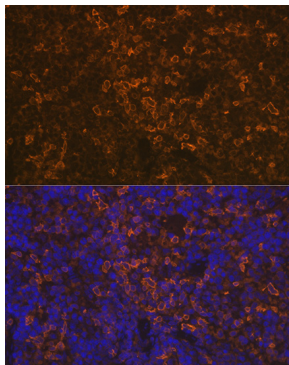
## Validation Data



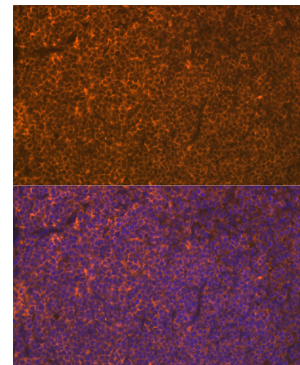
Western blot analysis of various lysates, using LSP1 Rabbit mAb (A3355) at 1:1000 dilution.  
Secondary antibody: HRP Goat Anti-Rabbit IgG (H+L) (A5014) at 1:10000 dilution.  
Lysates/proteins: 25ug per lane.  
Blocking buffer: 3% nonfat dry milk in TBST.  
Detection: ECL Basic Kit (RM00020).  
Exposure time: 60s.



Immunofluorescence analysis of Jurkat cells using LSP1 Rabbit mAb (A3355) at dilution of 1:100 (40x lens). Blue: DAPI for nuclear staining.



Immunofluorescence analysis of rat spleen using LSP1 Rabbit mAb (A3355) at dilution of 1:100 (40x lens). Blue: DAPI for nuclear staining.



Immunofluorescence analysis of mouse spleen using LSP1 Rabbit mAb (A3355) at dilution of 1:100 (40x lens). Blue: DAPI for nuclear staining.