

A3345

Leader in Biomolecular Solutions for Life Science



SKAP1 Rabbit pAb

Catalog No.: A3345

Basic Information

Observed MW

55kDa

Calculated MW

41kDa

Category

Polyclonal Antibody

Applications

WB, ELISA

Cross-Reactivity

Mouse, Rat

Background

This gene encodes a T cell adaptor protein, a class of intracellular molecules with modular domains capable of recruiting additional proteins but that exhibit no intrinsic enzymatic activity. The encoded protein contains a unique N-terminal region followed by a PH domain and C-terminal SH3 domain. Along with the adhesion and degranulation-promoting adaptor protein, the encoded protein plays a critical role in inside-out signaling by coupling T-cell antigen receptor stimulation to the activation of integrins.

Recommended Dilutions

WB 1:500 - 1:2000

Immunogen Information

Gene ID

8631

Swiss Prot

Q86WV1

Immunogen

Recombinant fusion protein containing a sequence corresponding to amino acids 1-358 of human SKAP1 (NP_001068567.1).

Synonyms

SCAP1; SKAP55; HEL-S-81p; SKAP1

Contact



www.abclonal.com

Product Information

Source

Rabbit

Isotype

IgG

Purification

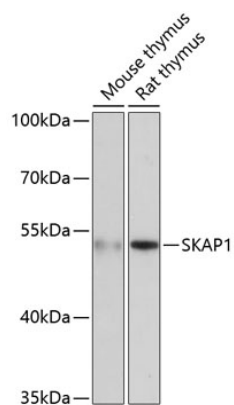
Affinity purification

Storage

Store at -20°C. Avoid freeze / thaw cycles.

Buffer: PBS with 0.02% sodium azide, 50% glycerol, pH 7.3.

Validation Data



Western blot analysis of various lysates using SKAP1 Rabbit pAb (A3345) at 1:3000 dilution.
Secondary antibody: HRP Goat Anti-Rabbit IgG (H+L) (A5014) at 1:10000 dilution.
Lysates/proteins: 25µg per lane.
Blocking buffer: 3% nonfat dry milk in TBST.
Detection: ECL Basic Kit (RM00020).
Exposure time: 90s.