

A3330

Leader in Biomolecular Solutions for Life Science



GLUT1/SLC2A1 Rabbit pAb

Catalog No.: A3330

Basic Information

Observed MW

45kDa

Calculated MW

54kDa

Category

Polyclonal Antibody

Applications

WB,IF/ICC,FC

Cross-Reactivity

Human,Mouse,Rat

Background

This gene encodes a major glucose transporter in the mammalian blood-brain barrier. The encoded protein is found primarily in the cell membrane and on the cell surface, where it can also function as a receptor for human T-cell leukemia virus (HTLV) I and II. Mutations in this gene have been found in a family with paroxysmal exertion-induced dyskinesia.

Recommended Dilutions

| | |
|---------------|----------------|
| WB | 1:200 - 1:2000 |
| IF/ICC | 1:50 - 1:100 |
| FC | 1:20 - 1:50 |

Immunogen Information

Gene ID

6513

Swiss Prot

P11166

Immunogen

Recombinant protein of human GLUT1/SLC2A1

Synonyms

CSE; PED; DYT9; GLUT; DYT17; DYT18; EIG12; GLUT1; HTLVR; GLUT-1; SDCHCN; GLUT1DS; GLUT1/SLC2A1

Contact



www.abclonal.com

Product Information

Source

Rabbit

Isotype

IgG

Purification

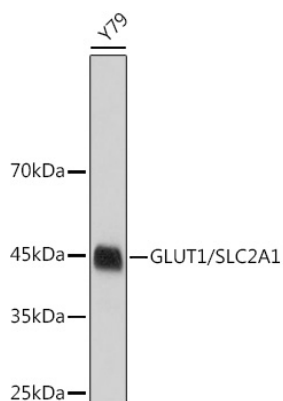
Affinity purification

Storage

Store at -20°C. Avoid freeze / thaw cycles.

Buffer: PBS with 0.02% sodium azide,50% glycerol,pH7.3.

Validation Data



Western blot analysis of extracts of Y79 cells, using GLUT1/SLC2A1 antibody (A3330).
Secondary antibody: HRP Goat Anti-Rabbit IgG (H+L) (AS014) at 1:10000 dilution.
Lysates/proteins: 25µg per lane.
Blocking buffer: 3% nonfat dry milk in TBST.