

A3321

Leader in Biomolecular Solutions for Life Science



# Apolipoprotein A2 Rabbit mAb

Catalog No.: A3321 **Recombinant**

## Basic Information

### Observed MW

10kDa

### Calculated MW

17kDa

### Category

SMab Recombinant Monoclonal Antibody

### Applications

WB,IF/ICC,ELISA

### Cross-Reactivity

Human,Mouse,Rat

### CloneNo number

ARC1946

## Background

This gene encodes apolipoprotein (apo-) A-II, which is the second most abundant protein of the high density lipoprotein particles. The protein is found in plasma as a monomer, homodimer, or heterodimer with apolipoprotein D. Defects in this gene may result in apolipoprotein A-II deficiency or hypercholesterolemia.

## Recommended Dilutions

WB	1:500 - 1:1000
IF/ICC	1:50 - 1:200

## Immunogen Information

### Gene ID

336

### Swiss Prot

P02652

### Immunogen

Recombinant fusion protein containing a sequence corresponding to amino acids 1-110 of human Apolipoprotein A2 (NP\_001634.1).

### Synonyms

apoAII; Apo-AII; ApoA-II; Apolipoprotein A2

## Contact



[www.abclonal.com](http://www.abclonal.com)

## Product Information

### Source

Rabbit

### Isotype

IgG

### Purification

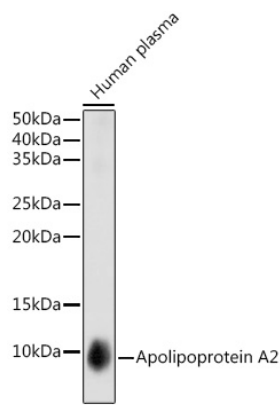
Affinity purification

### Storage

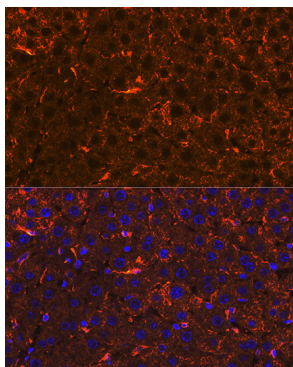
Store at -20°C. Avoid freeze / thaw cycles.

Buffer: PBS with 0.02% sodium azide,0.05% BSA,50% glycerol,pH7.3.

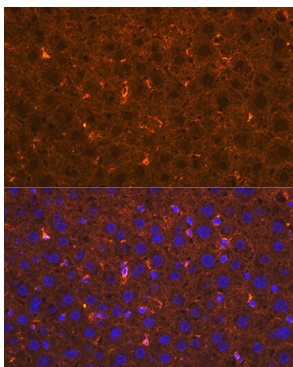
Validation Data



Western blot analysis of extracts of Human plasma cells, using Apolipoprotein A2 antibody (A3321) at 1:1000 dilution.  
Secondary antibody: HRP Goat Anti-Rabbit IgG (H+L) (AS014) at 1:10000 dilution.  
Lysates/proteins: 25µg per lane.  
Blocking buffer: 3% nonfat dry milk in TBST.  
Detection: ECL Basic Kit (RM00020).  
Exposure time: 1s.



Immunofluorescence analysis of rat liver using Apolipoprotein A2 Rabbit mAb (A3321) at dilution of 1:100 (40x lens). Blue: DAPI for nuclear staining.



Immunofluorescence analysis of mouse liver using Apolipoprotein A2 Rabbit mAb (A3321) at dilution of 1:100 (40x lens). Blue: DAPI for nuclear staining.