

A3305

Leader in Biomolecular Solutions for Life Science



MAP1B Rabbit pAb

Catalog No.: A3305

1 Publications

Basic Information

Observed MW

350kDa

Calculated MW

271kDa

Category

Polyclonal Antibody

Applications

WB,IF/ICC,ELISA

Cross-Reactivity

Human,Mouse,Rat

Background

This gene encodes a protein that belongs to the microtubule-associated protein family. The proteins of this family are thought to be involved in microtubule assembly, which is an essential step in neurogenesis. The product of this gene is a precursor polypeptide that presumably undergoes proteolytic processing to generate the final MAP1B heavy chain and LC1 light chain. Gene knockout studies of the mouse microtubule-associated protein 1B gene suggested an important role in development and function of the nervous system.

Recommended Dilutions

| | |
|--------|----------------|
| WB | 1:200 - 1:2000 |
| IF/ICC | 1:50 - 1:200 |

Immunogen Information

Gene ID

4131

Swiss Prot

P46821

Immunogen

Recombinant fusion protein containing a sequence corresponding to amino acids 1820-2100 of human MAP1B (NP_005900.2).

Synonyms

MAP5; PVNH9; DFNA83; FUTSCH; PPP1R102; MAP1B

Contact



www.abclonal.com

Product Information

Source

Rabbit

Isotype

IgG

Purification

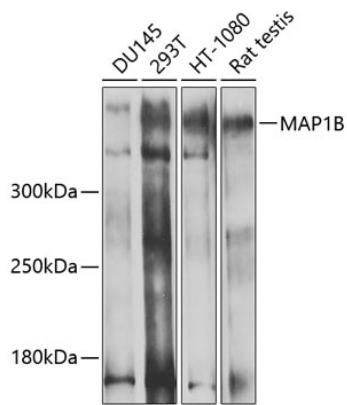
Affinity purification

Storage

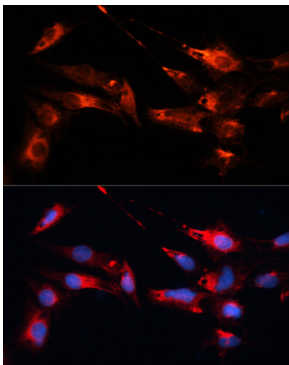
Store at -20°C. Avoid freeze / thaw cycles.

Buffer: PBS with 0.02% sodium azide,50% glycerol,pH7.3.

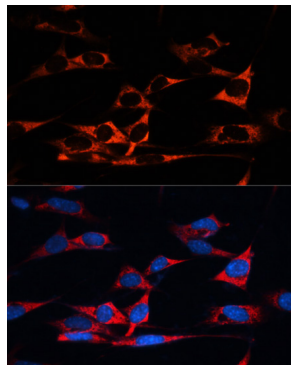
Validation Data



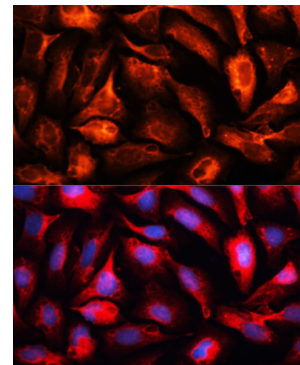
Western blot analysis of extracts of various cell lines, using MAP1B antibody (A3305) at 1:1000 dilution. Secondary antibody: HRP Goat Anti-Rabbit IgG (H+L) (A5014) at 1:10000 dilution. Lysates/proteins: 25µg per lane. Blocking buffer: 3% nonfat dry milk in TBST. Detection: ECL Basic Kit (RM00020). Exposure time: 1s.



Immunofluorescence analysis of C6 cells using MAP1B antibody (A3305) at dilution of 1:100. Blue: DAPI for nuclear staining.



Immunofluorescence analysis of NIH/3T3 cells using MAP1B antibody (A3305) at dilution of 1:100. Blue: DAPI for nuclear staining.



Immunofluorescence analysis of U2OS cells using MAP1B antibody (A3305) at dilution of 1:100. Blue: DAPI for nuclear staining.