

A3274

Leader in Biomolecular Solutions for Life Science



## SMO Rabbit pAb

Catalog No.: A3274

13 Publications

### Basic Information

#### Observed MW

86kDa

#### Calculated MW

86kDa

#### Category

Mouse Monoclonal Antibody

#### Applications

WB, ELISA

#### Cross-Reactivity

Human, Mouse

### Background

The protein encoded by this gene is a G protein-coupled receptor that interacts with the patched protein, a receptor for hedgehog proteins. The encoded protein transduces signals to other proteins after activation by a hedgehog protein/patched protein complex.

### Recommended Dilutions

WB 1:100 - 1:500

### Immunogen Information

#### Gene ID

6608

#### Swiss Prot

Q99835

#### Immunogen

Recombinant fusion protein containing a sequence corresponding to amino acids 28-233 of human SMO (NP\_005622.1).

#### Synonyms

Gx; CRJS; PHLS; SMOH; FZD11; SMO

### Contact



[www.abclonal.com](http://www.abclonal.com)

### Product Information

#### Source

Rabbit

#### Isotype

IgG

#### Purification

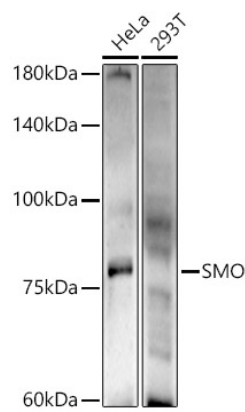
Affinity purification

#### Storage

Store at -20°C. Avoid freeze / thaw cycles.

Buffer: PBS with 0.05% proclin300, 50% glycerol, pH7.3.

Validation Data



Western blot analysis of extracts of various cell lines, using SMO antibody (A3274) at 1:500 dilution.  
Secondary antibody: HRP Goat Anti-Rabbit IgG (H+L) (AS014) at 1:10000 dilution.  
Lysates/proteins: 25µg per lane.  
Blocking buffer: 3% nonfat dry milk in TBST.  
Detection: ECL Enhanced Kit (RM00021).  
Exposure time: 120s.

Western blot analysis of extracts of Mouse brain, using SMO antibody (A3274) at 1:500 dilution.  
Secondary antibody: HRP Goat Anti-Rabbit IgG (H+L) (AS014) at 1:10000 dilution.  
Lysates/proteins: 25µg per lane.  
Blocking buffer: 3% nonfat dry milk in TBST.  
Detection: ECL Basic Kit (RM00020).  
Exposure time: 180s.

