

A3247

Leader in Biomolecular Solutions for Life Science



[KO Validated] SMARCB1/SNF5 Rabbit mAb

Catalog No.: A3247

KO Validated

Recombinant

Basic Information

Observed MW

44kDa

Calculated MW

44kDa

Category

SMab Recombinant Monoclonal Antibody

Applications

WB, IHC-P, ELISA

Cross-Reactivity

Human, Mouse, Rat

CloneNo number

ARC53139

Background

The protein encoded by this gene is part of a complex that relieves repressive chromatin structures, allowing the transcriptional machinery to access its targets more effectively. The encoded nuclear protein may also bind to and enhance the DNA joining activity of HIV-1 integrase. This gene has been found to be a tumor suppressor, and mutations in it have been associated with malignant rhabdoid tumors. Alternatively spliced transcript variants have been found for this gene.

Recommended Dilutions

WB 1:1000 - 1:5000

IHC-P 1:50 - 1:200

Immunogen Information

Gene ID

6598

Swiss Prot

Q12824

Immunogen

A synthetic peptide corresponding to a sequence within amino acids 50-150 of human SMARCB1/SNF5 (NP_003064.2).

Synonyms

RDT; CSS3; INI1; SNF5; Snr1; BAF47; INI-1; MRD15; RTPS1; Sfh1p; hSNFS; SNF5L1; SWNTS1; PPP1R144; F5

Contact



www.abclonal.com

Product Information

Source

Rabbit

Isotype

IgG

Purification

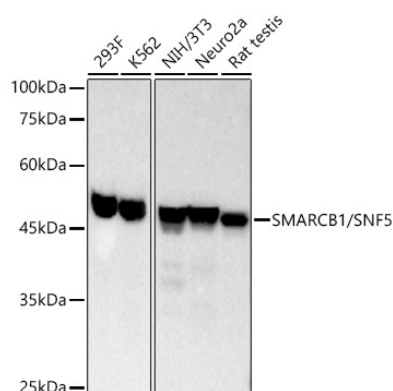
Affinity purification

Storage

Store at -20°C. Avoid freeze / thaw cycles.

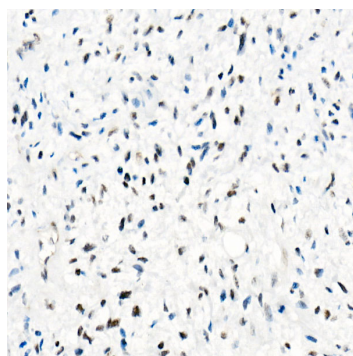
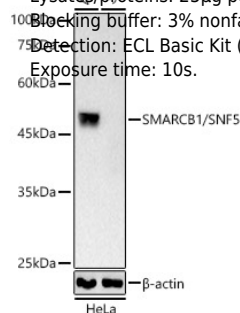
Buffer: PBS with 0.05% proclin300, 0.05% BSA, 50% glycerol, pH7.3.

Validation Data

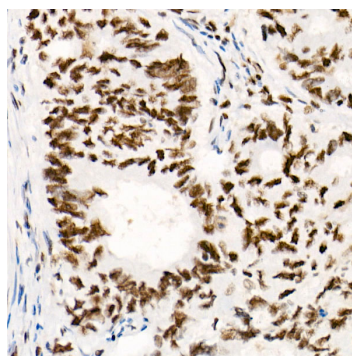


Western blot analysis of various lysates, using SMARCB1/SNF5 Rabbit mAb (A3247) at 1:2000 dilution.
 Secondary antibody: HRP Goat Anti-Rabbit IgG (H+L) (A5014) at 1:2000 dilution.
 Lysates/proteins: 25µg per lane.
 Blocking buffer: 3% nonfat dry milk in TBST.
 Detection: ECL Basic Kit (RM00020).
 Exposure time: 10s.

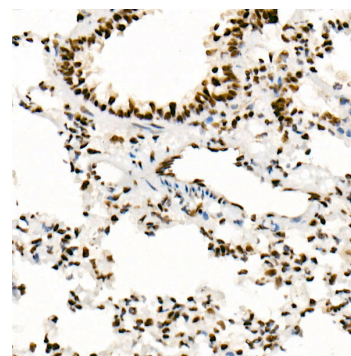
Western blot analysis of lysates from wild type (WT) and SMARCB1/SNF5 Rabbit mAb knockout (KO) HeLa(KO) cells using SMARCB1/SNF5 Rabbit mAb (A3247) at 1:2000 dilution.
 Secondary antibody: HRP Goat Anti-Rabbit IgG (H+L) (A5014) at 1:10000 dilution.
 Lysates/proteins: 25µg per lane.
 Blocking buffer: 3% nonfat dry milk in TBST.
 Detection: ECL Basic Kit (RM00020).
 Exposure time: 10s.



Immunohistochemistry analysis of SMARCB1/SNF5 in paraffin-embedded Human epithelioid sarcoma (ini-1 deletion) using [KO Validated] SMARCB1/SNF5 Rabbit mAb (A3247) at dilution of 1:100(40x lens). Perform high pressure antigen retrieval with 10 mM Tris/EDTA buffer pH 9.0 before commencing with IHC staining protocol.

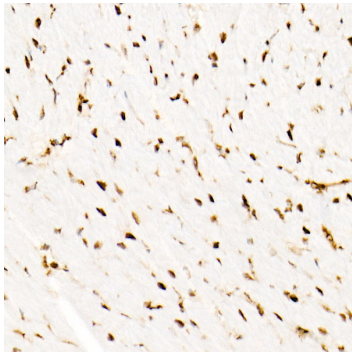


Immunohistochemistry analysis of SMARCB1/SNF5 in paraffin-embedded Human colon carcinoma using [KO Validated] SMARCB1/SNF5 Rabbit mAb (A3247) at dilution of 1:100(40x lens). Perform high pressure antigen retrieval with 10 mM Tris/EDTA buffer pH 9.0 before commencing with IHC staining protocol.

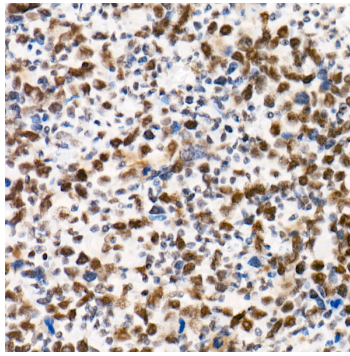


Immunohistochemistry analysis of SMARCB1/SNF5 in paraffin-embedded Rat lung using [KO Validated] SMARCB1/SNF5 Rabbit mAb (A3247) at dilution of 1:100(40x lens). Perform high pressure antigen retrieval with 10 mM Tris/EDTA buffer pH 9.0 before commencing with IHC staining protocol.

Validation Data



Immunohistochemistry analysis of SMARCB1/SNF5 in paraffin-embedded Mouse heart using [KO Validated] SMARCB1/SNF5 Rabbit mAb (A3247) at dilution of 1:100(40x lens).Perform high pressure antigen retrieval with 10 mM Tris/EDTA buffer pH 9.0 before commencing with IHC staining protocol.



Immunohistochemistry analysis of SMARCB1/SNF5 in paraffin-embedded Human undifferentiated carcinoma of esophagus using [KO Validated] SMARCB1/SNF5 Rabbit mAb (A3247) at dilution of 1:100(40x lens).Perform high pressure antigen retrieval with 10 mM Tris/EDTA buffer pH 9.0 before commencing with IHC staining protocol.