

A3186

Leader in Biomolecular Solutions for Life Science



## TTR Rabbit pAb

Catalog No.: A3186

1 Publications

### Basic Information

#### Observed MW

#### Calculated MW

16kDa

#### Category

Polyclonal Antibody

#### Applications

IF/ICC,ELISA

#### Cross-Reactivity

Human,Mouse,Rat

### Background

This gene encodes one of the three prealbumins, which include alpha-1-antitrypsin, transthyretin and orosomucoid. The encoded protein, transthyretin, is a homo-tetrameric carrier protein, which transports thyroid hormones in the plasma and cerebrospinal fluid. It is also involved in the transport of retinol (vitamin A) in the plasma by associating with retinol-binding protein. The protein may also be involved in other intracellular processes including proteolysis, nerve regeneration, autophagy and glucose homeostasis. Mutations in this gene are associated with amyloid deposition, predominantly affecting peripheral nerves or the heart, while a small percentage of the gene mutations are non-amyloidogenic. The mutations are implicated in the etiology of several diseases, including amyloidotic polyneuropathy, euthyroid hyperthyroxinaemia, amyloidotic vitreous opacities, cardiomyopathy, oculoleptomeningeal amyloidosis, meningocerebrovascular amyloidosis and carpal tunnel syndrome.

### Recommended Dilutions

IF/ICC 1:50 - 1:200

### Immunogen Information

#### Gene ID

7276

#### Swiss Prot

P02766

#### Immunogen

Recombinant fusion protein containing a sequence corresponding to amino acids 1-147 of human TTR (P02766).

#### Synonyms

CTS; TTN; ATTR; CTS1; PALB; TBPA; HEL111; HsT2651; TTR

### Contact



[www.abclonal.com](http://www.abclonal.com)

### Product Information

#### Source

Rabbit

#### Isotype

IgG

#### Purification

Affinity purification

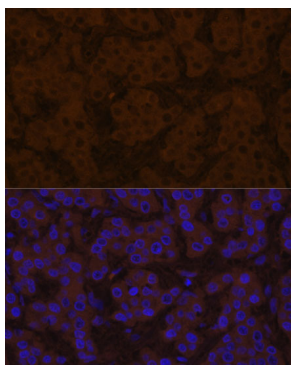
#### Storage

Store at -20°C. Avoid freeze / thaw cycles.

Buffer: PBS with 0.02% sodium azide,50% glycerol,pH7.3.

## Validation Data

---



Immunofluorescence analysis of human liver cancer using TTR Polyclonal Antibody (A3186) at dilution of 1:100 (40x lens). Blue: DAPI for nuclear staining.