

A3167

Leader in Biomolecular Solutions for Life Science



CSF2RA Rabbit pAb

Catalog No.: A3167

Basic Information

Observed MW

Calculated MW
46kDa

Category
Polyclonal Antibody

Applications
IF/ICC,ELISA

Cross-Reactivity
Human,Mouse

Background

The protein encoded by this gene is the alpha subunit of the heterodimeric receptor for colony stimulating factor 2, a cytokine which controls the production, differentiation, and function of granulocytes and macrophages. The encoded protein is a member of the cytokine family of receptors. This gene is found in the pseudoautosomal region (PAR) of the X and Y chromosomes. Multiple transcript variants encoding different isoforms have been found for this gene, with some of the isoforms being membrane-bound and others being soluble.

Recommended Dilutions

IF/ICC 1:50 - 1:200

Immunogen Information

Gene ID	Swiss Prot
1438	P15509

Immunogen

Recombinant fusion protein containing a sequence corresponding to amino acids 23-150 of human CSF2RA (NP_001155001.1).

Synonyms

GMR; CD116; CSF2R; SMDP4; CDw116; CSF2RX; CSF2RY; GMCSFR; CSF2RAX; CSF2RAY; alphaGMR; GMR-alpha; GMCSFR-alpha; GM-CSF-R-alpha; CSF2RA

Contact



www.abclonal.com

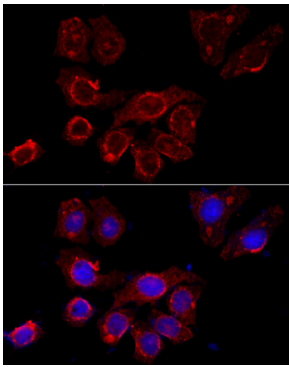
Product Information

Source	Isotype	Purification
Rabbit	IgG	Affinity purification

Storage

Store at -20°C. Avoid freeze / thaw cycles.
Buffer: PBS with 0.01% thimerosal, 50% glycerol, pH7.3.

Validation Data



Immunofluorescence analysis of HeLa cells using CSF2RA antibody (A3167) at dilution of 1:100 (40x lens). Blue: DAPI for nuclear staining.