

Asymmetric DiMethyl-Histone H3-R2 pAb

| | | | |
|-------------------------|---------------------------------------|----------------------|-----------------------|
| Catalog No. | A3155 | Category | Methylated Antibodies |
| Applications | WB, IHC, IF, IP, ChIP, ChIPseq | Observed MW | 17kDa |
| Cross-reactivity | Human, Mouse, Rat, Other (Wide Range) | Calculated MW | 15kDa |

Immunogen Information

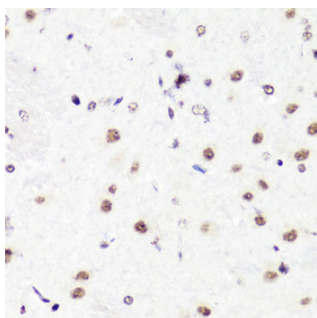
| | |
|-------------------|---|
| Immunogen | A synthetic methylated peptide corresponding to residues surrounding R2 of human histone H3 |
| Gene ID | 8290 |
| Swiss prot | Q16695 |
| Synonyms | H3.4;H3/g;H3FT;H3t |

Product information

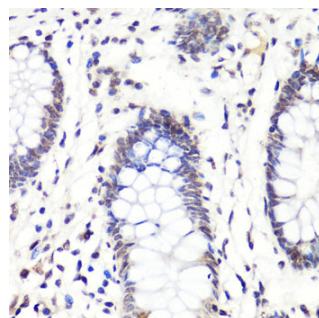
| | |
|----------------------------|--|
| Source | Rabbit |
| Isotype | IgG |
| Purification method | Affinity purification |
| Storage | Store at -20°C. Avoid freeze / thaw cycles. Buffer: PBS with 0.02% sodium azide, 50% glycerol, pH7.3. |

Background

Histones are basic nuclear proteins that are responsible for the nucleosome structure of the chromosomal fiber in eukaryotes. Nucleosomes consist of approximately 146 bp of DNA wrapped around a histone octamer composed of pairs of each of the four core histones (H2A, H2B, H3, and H4). The chromatin fiber is further compacted through the interaction of a linker histone, H1, with the DNA between the nucleosomes to form higher order chromatin structures. This gene is intronless and encodes a replication-dependent histone that is a member of the histone H3 family. Transcripts from this gene lack polyA tails; instead, they contain a palindromic termination element. This gene is located separately from the other H3 genes that are in the histone gene cluster on chromosome 6p22-p21.3.



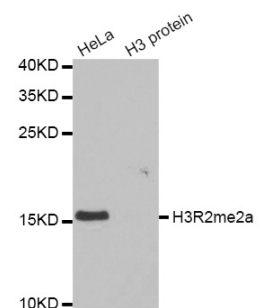
Immunohistochemistry of paraffin-embedded rat brain using H3R2me2a antibody (A3155) at dilution of 1:100 (40x lens).



Immunohistochemistry of paraffin-embedded human colon using H3R2me2a antibody (A3155) at dilution of 1:100 (40x lens).

Recommended Dilutions

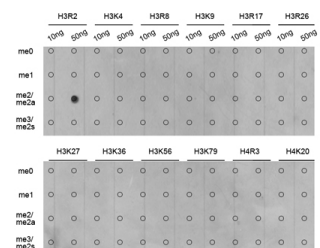
| | |
|---------|----------------|
| WB | 1:500 - 1:2000 |
| IHC | 1:50 - 1:200 |
| IF | 1:50 - 1:200 |
| IP | 1:50 - 1:200 |
| ChIP | 1:20 - 1:100 |
| ChIPseq | 1:20 - 1:100 |



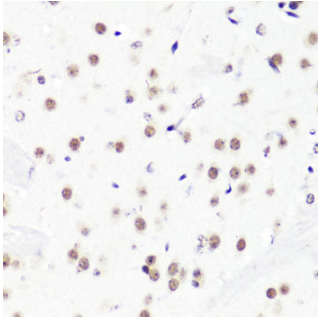
Western blot analysis of extracts of various cell lines, using Asymmetric DiMethyl-Histone H3-R2 antibody (A3155).

Secondary antibody: HRP Goat Anti-Rabbit IgG (H+L) (AS014) at 1:10000 dilution.

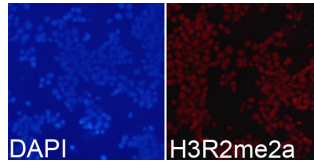
Lysates/proteins: 25ug per lane.
Blocking buffer: 3% nonfat dry milk in TBST.



Dot-blot analysis of all sorts of methylation peptides using Asymmetric DiMethyl-Histone H3-R2 antibody (A3155).



Immunohistochemistry of paraffin-embedded mouse brain using H3R2me2a antibody (A3155) at dilution of 1:100 (40x lens).



Immunofluorescence analysis of 293T cells using Asymmetric DiMethyl-Histone H3-R2 antibody (A3155). Blue: DAPI for nuclear staining.