

A3137

Leader in Biomolecular Solutions for Life Science



## BGN Rabbit pAb

Catalog No.: A3137

### Basic Information

**Observed MW**

42kDa

**Calculated MW**

42kDa

**Category**

Polyclonal Antibody

**Applications**

WB, ELISA

**Cross-Reactivity**

Human

### Background

This gene encodes a member of the small leucine-rich proteoglycan (SLRP) family of proteins. The encoded preproprotein is proteolytically processed to generate the mature protein, which plays a role in bone growth, muscle development and regeneration, and collagen fibril assembly in multiple tissues. This protein may also regulate inflammation and innate immunity. Additionally, the encoded protein may contribute to atherosclerosis and aortic valve stenosis in human patients. This gene and the related gene decorin are thought to be the result of a gene duplication.

### Recommended Dilutions

WB 1:500 - 1:1000

### Immunogen Information

**Gene ID**

633

**Swiss Prot**

P21810

**Immunogen**

Recombinant fusion protein containing a sequence corresponding to amino acids 20-230 of human BGN (NP\_001702.1).

**Synonyms**

PGI; MRLS; DSPG1; PG-S1; SEMDX; SLRR1A; BGN

### Contact



[www.abclonal.com](http://www.abclonal.com)

### Product Information

**Source**

Rabbit

**Isotype**

IgG

**Purification**

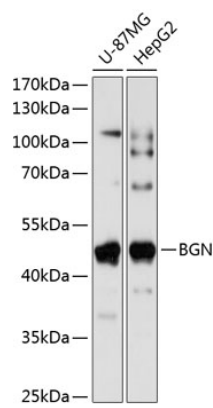
Affinity purification

**Storage**

Store at -20°C. Avoid freeze / thaw cycles.

Buffer: PBS with 0.01% thimerosal, 50% glycerol, pH 7.3.

# Validation Data



Western blot analysis of various lysates using BGN Rabbit pAb (A3137) at 1:1000 dilution.  
Secondary antibody: HRP Goat Anti-Rabbit IgG (H+L) (A5014) at 1:10000 dilution.  
Lysates/proteins: 25µg per lane.  
Blocking buffer: 3% nonfat dry milk in TBST.  
Detection: ECL Basic Kit (RM00020).  
Exposure time: 5s.