

A3126

Leader in Biomolecular Solutions for Life Science



SLC5A1 Rabbit pAb

Catalog No.: A3126

2 Publications

Basic Information

Observed MW

66kDa

Calculated MW

73kDa

Category

Polyclonal Antibody

Applications

WB, IHC-P

Cross-Reactivity

Human, Mouse, Rat

Background

This gene encodes a member of the sodium-dependent glucose transporter (SGLT) family. The encoded integral membrane protein is the primary mediator of dietary glucose and galactose uptake from the intestinal lumen. Mutations in this gene have been associated with glucose-galactose malabsorption. Multiple transcript variants encoding different isoforms have been found for this gene.

Recommended Dilutions

| | |
|-------|----------------|
| WB | 1:500 - 1:2000 |
| IHC-P | 1:50 - 1:100 |

Immunogen Information

Gene ID

6523

Swiss Prot

P13866

Immunogen

A synthetic peptide corresponding to a sequence within amino acids 400-500 of human SLC5A1 (P13866).

Synonyms

NAGT; SGLT1; SGLT-1; D22S675; SLC5A1

Contact



www.abclonal.com

Product Information

Source

Rabbit

Isotype

IgG

Purification

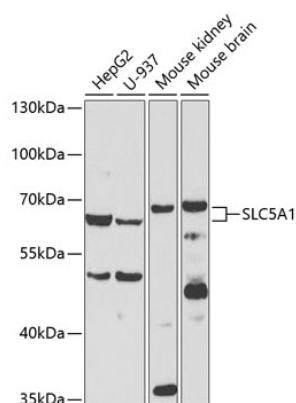
Affinity purification

Storage

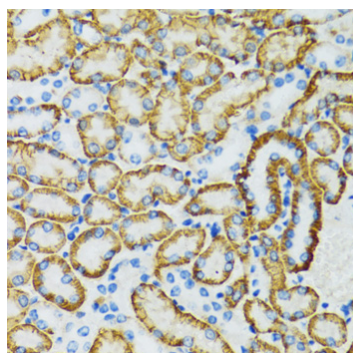
Store at -20°C. Avoid freeze / thaw cycles.

Buffer: PBS with 0.02% sodium azide, 50% glycerol, pH 7.3.

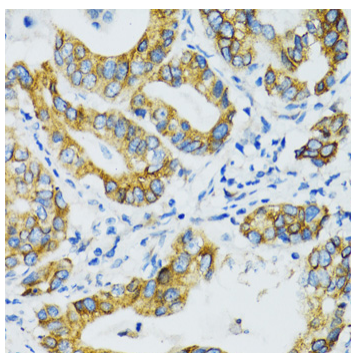
Validation Data



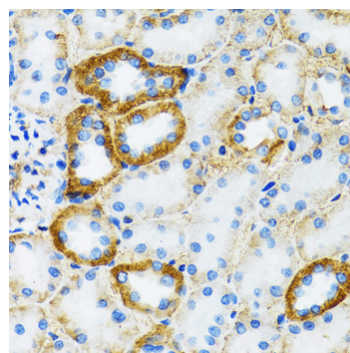
Western blot analysis of various lysates using SLC5A1 Rabbit pAb (A3126) at 1:500 dilution.
 Secondary antibody: HRP Goat Anti-Rabbit IgG (H+L) (A5014) at 1:10000 dilution.
 Lysates/proteins: 25µg per lane.
 Blocking buffer: 3% nonfat dry milk in TBST.
 Detection: ECL Basic Kit (RM00020).
 Exposure time: 120s.



Immunohistochemistry analysis of SLC5A1 in paraffin-embedded rat kidney using SLC5A1 Rabbit pAb (A3126) at dilution of 1:100 (40x lens). Perform microwave antigen retrieval with 10 mM PBS buffer pH 7.2 before commencing with IHC staining protocol.



Immunohistochemistry analysis of SLC5A1 in paraffin-embedded human gastric cancer using SLC5A1 Rabbit pAb (A3126) at dilution of 1:100 (40x lens). Perform microwave antigen retrieval with 10 mM PBS buffer pH 7.2 before commencing with IHC staining protocol.



Immunohistochemistry analysis of SLC5A1 in paraffin-embedded mouse kidney using SLC5A1 Rabbit pAb (A3126) at dilution of 1:100 (40x lens). Perform microwave antigen retrieval with 10 mM PBS buffer pH 7.2 before commencing with IHC staining protocol.