

A3095

Leader in Biomolecular Solutions for Life Science



TRAF7 Rabbit pAb

Catalog No.: A3095

Basic Information

Observed MW

67kDa

Calculated MW

75kDa

Category

Polyclonal Antibody

Applications

WB, IHC-P, IF/ICC, ELISA

Cross-Reactivity

Human, Mouse, Rat

Background

Tumor necrosis factor (TNF; see MIM 191160) receptor-associated factors, such as TRAF7, are signal transducers for members of the TNF receptor superfamily (see MIM 191190). TRAFs are composed of an N-terminal cysteine/histidine-rich region containing zinc RING and/or zinc finger motifs; a coiled-coil (leucine zipper) motif; and a homologous region that defines the TRAF family, the TRAF domain, which is involved in self-association and receptor binding.

Recommended Dilutions

WB	1:500 - 1:1000
IHC-P	1:50 - 1:200
IF/ICC	1:50 - 1:100

Immunogen Information

Gene ID

84231

Swiss Prot

Q6Q0C0

Immunogen

Recombinant fusion protein containing a sequence corresponding to amino acids 380-479 of human TRAF7 (NP_115647.2).

Synonyms

RFWD1; RNF119; CAFDADD; TRAF7

Contact



www.abclonal.com

Product Information

Source

Rabbit

Isotype

IgG

Purification

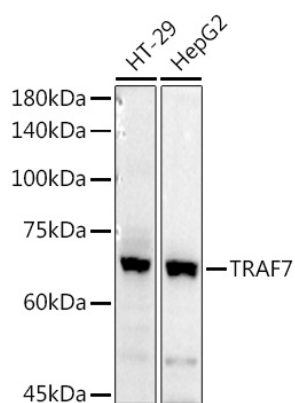
Affinity purification

Storage

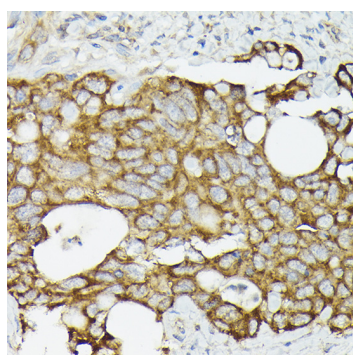
Store at -20°C. Avoid freeze / thaw cycles.

Buffer: PBS with 0.05% proclin300, 50% glycerol, pH7.3.

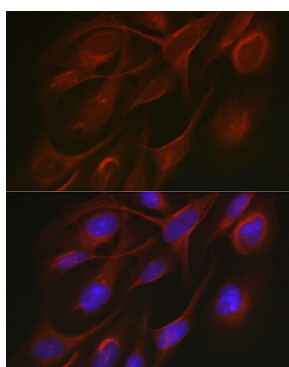
Validation Data



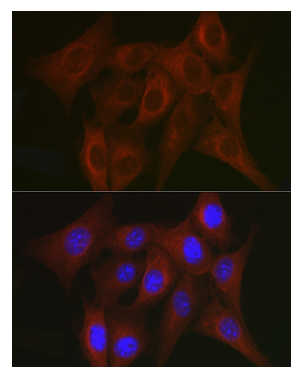
Western blot analysis of extracts of various cell lines, using TRAF7 antibody (A3095) at 1:1000 dilution.
 Secondary antibody: HRP Goat Anti-Rabbit IgG (H+L) (A5014) at 1:10000 dilution.
 Lysates/proteins: 25µg per lane.
 Blocking buffer: 3% nonfat dry milk in TBST.
 Detection: ECL Basic Kit (RM00020).
 Exposure time: 180s.



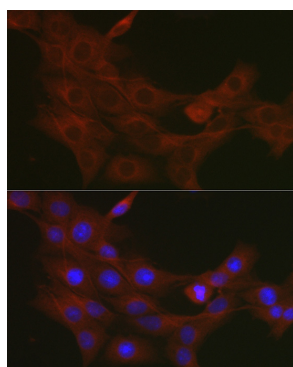
Immunohistochemistry analysis of paraffin-embedded human colon carcinoma using TRAF7 antibody (A3095) at dilution of 1:50 (40x lens). Perform high pressure antigen retrieval with 10 mM citrate buffer pH 6.0 before commencing with IHC staining protocol.



Immunofluorescence analysis of U2OS cells using TRAF7 antibody (A3095) at dilution of 1:50. Blue: DAPI for nuclear staining.



Immunofluorescence analysis of NIH/3T3 cells using TRAF7 antibody (A3095) at dilution of 1:50. Blue: DAPI for nuclear staining.



Immunofluorescence analysis of PC-12 cells using TRAF7 antibody (A3095) at dilution of 1:50. Blue: DAPI for nuclear staining.