

A3039

Leader in Biomolecular Solutions for Life Science



MYL9 Rabbit pAb

Catalog No.: A3039

1 Publications

Basic Information

Observed MW

18kDa

Calculated MW

20kDa

Category

Mouse Monoclonal Antibody

Applications

WB,IF/ICC,ELISA

Cross-Reactivity

Human,Mouse,Rat

Background

Myosin, a structural component of muscle, consists of two heavy chains and four light chains. The protein encoded by this gene is a myosin light chain that may regulate muscle contraction by modulating the ATPase activity of myosin heads. The encoded protein binds calcium and is activated by myosin light chain kinase. Two transcript variants encoding different isoforms have been found for this gene.

Recommended Dilutions

WB	1:500 - 1:1000
IF/ICC	1:50 - 1:200

Immunogen Information

Gene ID

10398

Swiss Prot

P24844

Immunogen

A synthetic peptide corresponding to a sequence within amino acids 1-100 of human MYL9 (NP_006088.2).

Synonyms

LC20; MLC2; MRLC1; MYRL2; MLC-2C; MMIHS4; MYL9

Contact



www.abclonal.com

Product Information

Source

Rabbit

Isotype

IgG

Purification

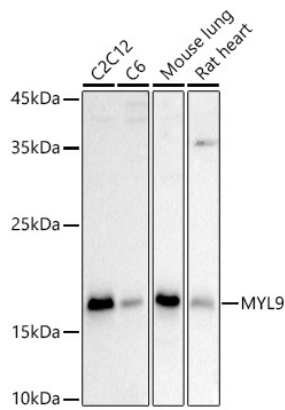
Affinity purification

Storage

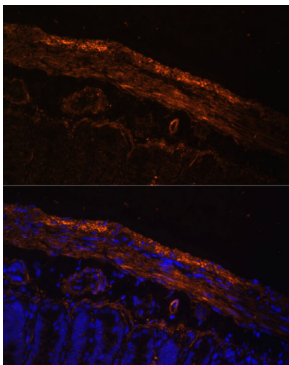
Store at -20°C. Avoid freeze / thaw cycles.

Buffer: PBS with 0.01% thimerosal, 50% glycerol, pH7.3.

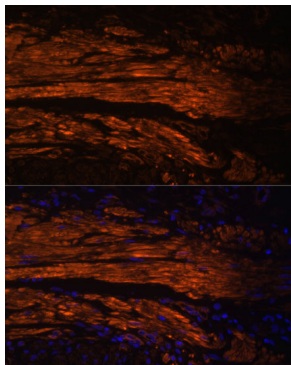
Validation Data



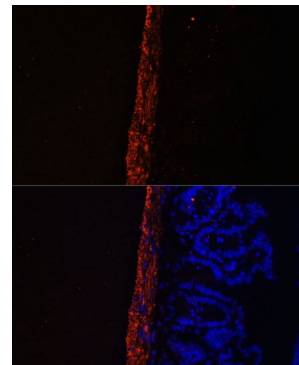
Western blot analysis of extracts of various cell lines, using MYL9 antibody (A3039) at 1:1000 dilution. Secondary antibody: HRP Goat Anti-Rabbit IgG (H+L) (A5014) at 1:10000 dilution. Lysates/proteins: 25µg per lane. Blocking buffer: 3% nonfat dry milk in TBST. Detection: ECL Basic Kit (RM00020). Exposure time: 90s.



Immunofluorescence analysis of Rat intestine using MYL9 antibody (A3039) at dilution of 1:100. Blue: DAPI for nuclear staining.



Immunofluorescence analysis of Human colon carcinoma using MYL9 antibody (A3039) at dilution of 1:100. Blue: DAPI for nuclear staining.



Immunofluorescence analysis of Mouse intestine using MYL9 antibody (A3039) at dilution of 1:100. Blue: DAPI for nuclear staining.