

A2912

Leader in Biomolecular Solutions for Life Science



ENPP7 Rabbit pAb

Catalog No.: A2912

Basic Information

Observed MW

51kDa

Calculated MW

51kDa

Category

Polyclonal Antibody

Applications

WB, ELISA

Cross-Reactivity

Human

Background

The protein encoded by this gene is an intestinal alkaline sphingomyelin phosphodiesterase that converts sphingomyelin to ceramide and phosphocholine. The encoded protein is anchored in the cell membrane, and it may function to protect the intestinal mucosa from inflammation and tumorigenesis. This protein is glycosylated and also exhibits lysophosphatidylcholine hydrolase activity.

Recommended Dilutions

WB 1:500 - 1:2000

Immunogen Information

Gene ID

339221

Swiss Prot

Q6UWV6

Immunogen

A synthetic peptide corresponding to a sequence within amino acids 250-350 of human ENPP7 (Q6UWV6).

Synonyms

NPP7; NPP-7; E-NPP 7; ALK-SMase; ENPP7

Contact



www.abclonal.com

Product Information

Source

Rabbit

Isotype

IgG

Purification

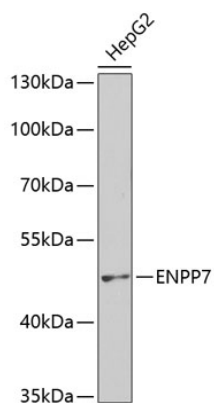
Affinity purification

Storage

Store at -20°C. Avoid freeze / thaw cycles.

Buffer: PBS with 0.02% sodium azide, 50% glycerol, pH 7.3.

Validation Data



Western blot analysis of extracts of HepG2 cells, using ENPP7 antibody (A2912) at 1:400 dilution.
Secondary antibody: HRP Goat Anti-Rabbit IgG (H+L) (A5014) at 1:10000 dilution.
Lysates/proteins: 25µg per lane.
Blocking buffer: 3% nonfat dry milk in TBST.
Detection: ECL Basic Kit (RM00020).
Exposure time: 90s.