

A2883

Leader in Biomolecular Solutions for Life Science



GJD2 Rabbit pAb

Catalog No.: A2883

Basic Information

Observed MW

37kDa

Calculated MW

36kDa

Category

Polyclonal Antibody

Applications

WB, ELISA

Cross-Reactivity

Human, Mouse, Rat

Background

This gene encodes a member of the connexin protein family. Connexins are gap junction proteins which are arranged in groups of 6 around a central pore to form a connexon, a component of the gap junction intercellular channel. The channels formed by this protein allow cationic molecule exchange between human beta cells and may function in the regulation of insulin secretion.

Recommended Dilutions

WB 1:200 - 1:2000

Immunogen Information

Gene ID

57369

Swiss Prot

Q9UKL4

Immunogen

Recombinant fusion protein containing a sequence corresponding to amino acids 99-197 of human GJD2 (NP_065711.1).

Synonyms

CX36; GJA9; GJD2

Contact



www.abclonal.com

Product Information

Source

Rabbit

Isotype

IgG

Purification

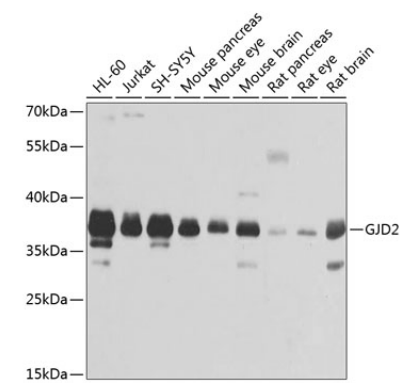
Affinity purification

Storage

Store at -20°C. Avoid freeze / thaw cycles.

Buffer: PBS with 0.02% sodium azide, 50% glycerol, pH 7.3.

Validation Data



Western blot analysis of extracts of various cell lines, using GJD2 antibody (A2883) at 1:1000 dilution.
Secondary antibody: HRP Goat Anti-Rabbit IgG (H+L) (A5014) at 1:10000 dilution.
Lysates/proteins: 25µg per lane.
Blocking buffer: 3% nonfat dry milk in TBST.
Detection: ECL Basic Kit (RM00020).
Exposure time: 1s.