

A2879

Leader in Biomolecular Solutions for Life Science



SKI Rabbit pAb

Catalog No.: A2879

Basic Information

Observed MW

85kDa

Calculated MW

80kDa

Category

Mouse Monoclonal Antibody

Applications

WB, ELISA

Cross-Reactivity

Human, Mouse, Rat

Background

This gene encodes the nuclear protooncogene protein homolog of avian sarcoma viral (v-ski) oncogene. It functions as a repressor of TGF-beta signaling, and may play a role in neural tube development and muscle differentiation.

Recommended Dilutions

WB 1:500 - 1:1000

Immunogen Information

Gene ID

6497

Swiss Prot

P12755

Immunogen

A synthetic peptide corresponding to a sequence within amino acids 650-728 of human SKI (NP_003027.1).

Synonyms

SGS; SKV; SKI

Contact



www.abclonal.com

Product Information

Source

Rabbit

Isotype

IgG

Purification

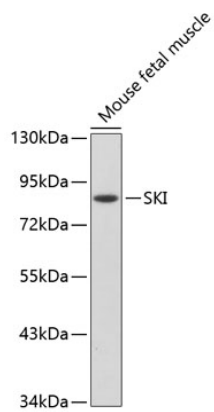
Affinity purification

Storage

Store at -20°C. Avoid freeze / thaw cycles.

Buffer: PBS with 0.05% proclin300, 50% glycerol, pH7.3.

Validation Data



Western blot analysis of extracts of mouse fetal muscle, using SKI antibody (A2879).
Secondary antibody: HRP Goat Anti-Rabbit IgG (H+L) (A5014) at 1:10000 dilution.
Lysates/proteins: 25µg per lane.
Blocking buffer: 3% nonfat dry milk in TBST.