

# CCL17 Rabbit pAb

Catalog No.: A2854 **1 Publications**

## Basic Information

**Observed MW**

38-40kDa

**Calculated MW**

11kDa

**Category**

Primary antibody

**Applications**

ELISA, WB

**Cross-Reactivity**

Human, Mouse, Rat

## Background

This antimicrobial gene is one of several Cys-Cys (CC) cytokine genes clustered on the q arm of chromosome 16. Cytokines are a family of secreted proteins involved in immunoregulatory and inflammatory processes. The CC cytokines are proteins characterized by two adjacent cysteines. The cytokine encoded by this gene displays chemotactic activity for T lymphocytes, but not monocytes or granulocytes. The product of this gene binds to chemokine receptors CCR4 and CCR8. This chemokine plays important roles in T cell development in thymus as well as in trafficking and activation of mature T cells.

## Recommended Dilutions

**WB** 1:500 - 1:1000

## Immunogen Information

**Gene ID**

6361

**Swiss Prot**

Q92583

**Immunogen**

Recombinant fusion protein containing a sequence corresponding to amino acids 24-94 of human CCL17 (NP\_002978.1).

**Synonyms**

TARC; ABCD-2; SCYA17; A-152E5.3; CCL17

## Contact

 | [www.abclonal.com](http://www.abclonal.com)

## Product Information

**Source**

Rabbit

**Isotype**

IgG

**Purification**

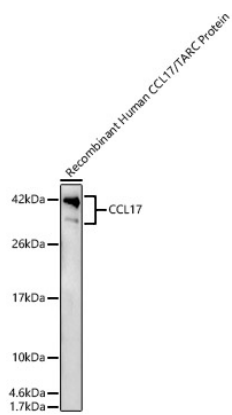
Affinity purification

**Storage**

Store at -20°C. Avoid freeze / thaw cycles.

Buffer: PBS with 0.05% proclin300, 50% glycerol, pH7.3.

# Validation Data



Western blot analysis of Recombinant Human CCL17/TARC Protein, using CCL17 Rabbit pAb (A2854) at 1:6000 dilution.  
Secondary antibody: HRP Goat Anti-Rabbit IgG (H+L) (A5014) at 1:10000 dilution.  
Lysates/proteins: 25ug per lane.  
Blocking buffer: 3% nonfat dry milk in TBST.  
Detection: ECL Enhanced Kit (RM00021).  
Exposure time: 60s.