

A2833

Leader in Biomolecular Solutions for Life Science



## LAT1/SLC7A5 Rabbit pAb

Catalog No.: A2833

3 Publications

### Basic Information

#### Observed MW

39kDa/50kDa

#### Calculated MW

55kDa

#### Category

Mouse Monoclonal Antibody

#### Applications

WB,IF/ICC,ELISA

#### Cross-Reactivity

Human,Mouse,Rat

### Background

Enables L-leucine transmembrane transporter activity; L-tryptophan transmembrane transporter activity; and thyroid hormone transmembrane transporter activity. Involved in carboxylic acid transport; thyroid hormone transport; and xenobiotic transport. Located in cytosol; intracellular membrane-bounded organelle; and plasma membrane. Is integral component of membrane. Part of amino acid transport complex; apical plasma membrane; and microvillus membrane.

### Recommended Dilutions

WB	1:500 - 1:1000
IF/ICC	1:100 - 1:500

### Immunogen Information

#### Gene ID

8140

#### Swiss Prot

Q01650

#### Immunogen

Recombinant fusion protein containing a sequence corresponding to amino acids 1-125 of human LAT1/SLC7A5 (NP\_003477.4).

#### Synonyms

E16; CD98; LAT1; 4F2LC; MPE16; D16S469E; LAT1/SLC7A5

### Contact



[www.abclonal.com](http://www.abclonal.com)

### Product Information

#### Source

Rabbit

#### Isotype

IgG

#### Purification

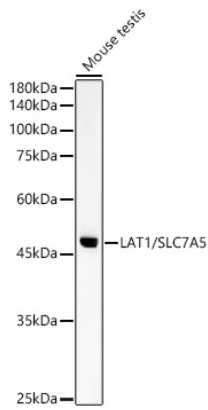
Affinity purification

#### Storage

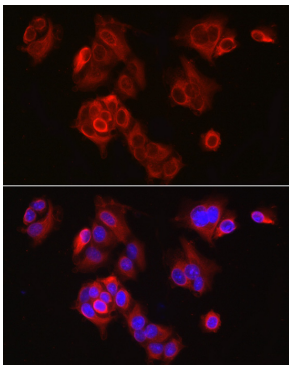
Store at -20°C. Avoid freeze / thaw cycles.

Buffer: PBS with 0.05% proclin300,50% glycerol,pH7.3.

## Validation Data



Western blot analysis of Mouse testis, using LAT1/SLC7A5 antibody (A2833) at 1:900 dilution.  
Secondary antibody: HRP Goat Anti-Rabbit IgG (H+L) (A5014) at 1:10000 dilution.  
Lysates/proteins: 25µg per lane.  
Blocking buffer: 3% nonfat dry milk in TBST.  
Detection: ECL Basic Kit (RM00020).  
Exposure time: 60s.



Immunofluorescence analysis of MCF7 cells using LAT1/SLC7A5 Rabbit pAb (A2833) at dilution of 1:300 (40x lens). Blue: DAPI for nuclear staining.