

A2830

Leader in Biomolecular Solutions for Life Science



ARL2 Rabbit pAb

Catalog No.: A2830

Basic Information

Observed MW

21kDa

Calculated MW

21kDa

Category

Polyclonal Antibody

Applications

WB, ELISA

Cross-Reactivity

Mouse, Rat

Background

This gene encodes a small GTP-binding protein of the RAS superfamily which functions as an ADP-ribosylation factor (ARF). The encoded protein is one of a functionally distinct group of ARF-like genes.

Recommended Dilutions

WB 1:500 - 1:2000

Immunogen Information

Gene ID

402

Swiss Prot

P36404

Immunogen

Recombinant fusion protein containing a sequence corresponding to amino acids 1-184 of human ARL2 (NP_001658.2).

Synonyms

ARFL2; MRCS1; ARL2

Contact



www.abclonal.com

Product Information

Source

Rabbit

Isotype

IgG

Purification

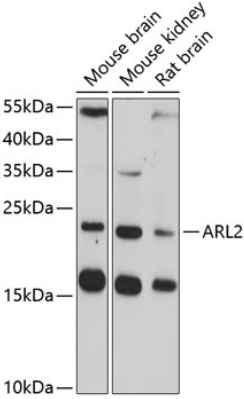
Affinity purification

Storage

Store at -20°C. Avoid freeze / thaw cycles.

Buffer: PBS with 0.01% thimerosal, 50% glycerol, pH 7.3.

Validation Data



Western blot analysis of various lysates using ARL2 Rabbit pAb (A2830) at 1:3000 dilution. Secondary antibody: HRP Goat Anti-Rabbit IgG (H+L) (A5014) at 1:10000 dilution. Lysates/proteins: 25µg per lane. Blocking buffer: 3% nonfat dry milk in TBST. Detection: ECL Enhanced Kit (RM00021). Exposure time: 90s.