

A2803

Leader in Biomolecular Solutions for Life Science



Alpha-1 Antichymotrypsin (SERPINA3) Rabbit pAb

Catalog No.: A2803

1 Publications

Basic Information

Observed MW

50-70kDa

Calculated MW

48kDa

Category

Polyclonal Antibody

Applications

WB, IHC-P, ELISA

Cross-Reactivity

Human

Background

The protein encoded by this gene is a member of the serpin family of proteins, a group of proteins that inhibit serine proteases. This gene is one in a cluster of serpin genes located on the q arm of chromosome 14. Polymorphisms in this protein appear to be tissue specific and influence protease targeting. Variations in this protein's sequence have been implicated in Alzheimer's disease, and deficiency of this protein has been associated with liver disease. Mutations have been identified in patients with Parkinson disease and chronic obstructive pulmonary disease.

Recommended Dilutions

WB	1:500 - 1:1000
IHC-P	1:100 - 1:500

Immunogen Information

Gene ID

12

Swiss Prot

P01011

Immunogen

A synthetic peptide corresponding to a sequence within amino acids 24-423 of human Alpha-1 Antichymotrypsin (SERPINA3) (NP_001076.2).

Synonyms

ACT; AACT; GIG24; GIG25; Alpha-1 Antichymotrypsin (SERPINA3)

Contact



www.abclonal.com

Product Information

Source

Rabbit

Isotype

IgG

Purification

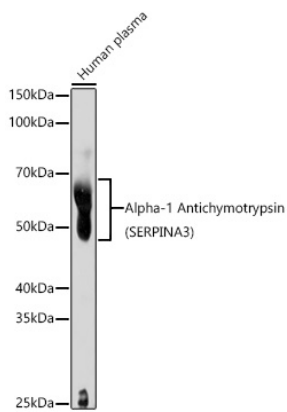
Affinity purification

Storage

Store at -20°C. Avoid freeze / thaw cycles.

Buffer: PBS with 0.01% thimerosal, 50% glycerol, pH7.3.

Validation Data



Western blot analysis of extracts of Human plasma, using Alpha-1 Antichymotrypsin (SERPINA3) antibody (A2803) at 1:1000 dilution.

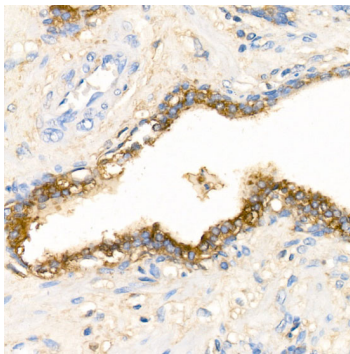
Secondary antibody: HRP Goat Anti-Rabbit IgG (H+L) (AS014) at 1:10000 dilution.

Lysates/proteins: 25µg per lane.

Blocking buffer: 3% nonfat dry milk in TBST.

Detection: ECL Basic Kit (RM00020).

Exposure time: 10s.



Immunohistochemistry analysis of paraffin-embedded human prostate cancer using Alpha-1 Antichymotrypsin (SERPINA3) Rabbit pAb (A2803) at dilution of 1:300 (40x lens). Perform high pressure antigen retrieval with 10 mM citrate buffer pH 6.0 before commencing with IHC staining protocol.