

A2751

Leader in Biomolecular Solutions for Life Science



IMMT Rabbit pAb

Catalog No.: A2751

1 Publications

Basic Information

Observed MW

90kDa

Calculated MW

84kDa

Category

Mouse Monoclonal Antibody

Applications

WB, IHC-P, IF/ICC, ELISA

Cross-Reactivity

Human, Mouse, Rat

Background

Enables RNA binding activity. Involved in cristae formation. Located in mitochondrial inner membrane. Part of MICOS complex.

Recommended Dilutions

WB	1:500 - 1:1000
IHC-P	1:50 - 1:200
IF/ICC	1:50 - 1:200

Immunogen Information

Gene ID

10989

Swiss Prot

Q16891

Immunogen

Recombinant fusion protein containing a sequence corresponding to amino acids 120-270 of human IMMT (NP_006830.2).

Synonyms

HMP; P87; P89; PIG4; Mic60; PIG52; MINOS2; P87/89; MICOS60; IMMT

Contact



www.abclonal.com

Product Information

Source

Rabbit

Isotype

IgG

Purification

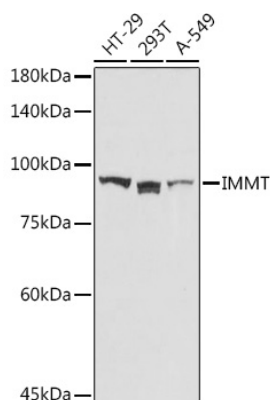
Affinity purification

Storage

Store at -20°C. Avoid freeze / thaw cycles.

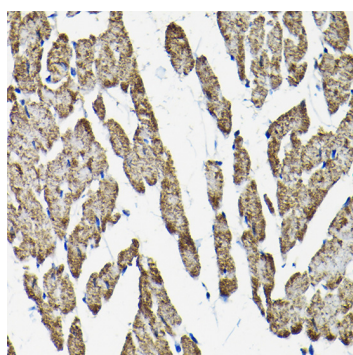
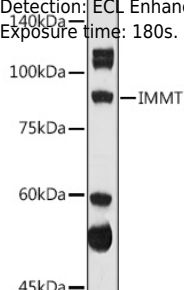
Buffer: PBS with 0.02% sodium azide, 50% glycerol, pH7.3.

Validation Data

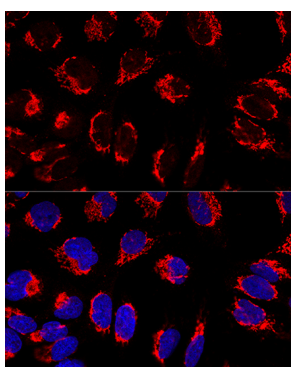


Western blot analysis of various lysates using IMMT Rabbit pAb (A2751) at 1:1000 dilution.
 Secondary antibody: HRP Goat Anti-Rabbit IgG (H+L) (A5014) at 1:10000 dilution.
 Lysates/proteins: 25µg per lane.
 Blocking buffer: 3% nonfat dry milk in TBST.
 Detection: ECL Basic Kit (RM00020).
 Exposure time: 30s.

Western blot analysis of lysates from Mouse brain, using IMMT Rabbit pAb (A2751) at 1:1000 dilution.
 Secondary antibody: HRP Goat Anti-Rabbit IgG (H+L) (A5014) at 1:10000 dilution.
 Lysates/proteins: 25µg per lane.
 Blocking buffer: 3% nonfat dry milk in TBST.
 Detection: ECL Enhanced Kit (RM00021).
 Exposure time: 180s.



Immunohistochemistry analysis of IMMT in paraffin-embedded rat heart tissue using IMMT Rabbit pAb (A2751) at a dilution of 1:100 (40x lens). High pressure antigen retrieval was performed with 0.01 M citrate buffer (pH 6.0) prior to IHC staining.



Confocal immunofluorescence analysis of U2OS cells using IMMT Rabbit pAb (A2751) at dilution of 1:100. Blue: DAPI for nuclear staining.