

A2741

Leader in Biomolecular Solutions for Life Science



## GPC6 Rabbit pAb

Catalog No.: A2741

2 Publications

### Basic Information

#### Observed MW

63kDa

#### Calculated MW

63kDa

#### Category

Polyclonal Antibody

#### Applications

WB, IF/ICC, ELISA

#### Cross-Reactivity

Human, Mouse

### Background

The glypicans comprise a family of glycosylphosphatidylinositol-anchored heparan sulfate proteoglycans, and they have been implicated in the control of cell growth and cell division. The glypican encoded by this gene is a putative cell surface coreceptor for growth factors, extracellular matrix proteins, proteases and anti-proteases. Mutations in this gene are associated with omodysplasia 1.

### Recommended Dilutions

|        |                |
|--------|----------------|
| WB     | 1:500 - 1:1000 |
| IF/ICC | 1:50 - 1:200   |

### Immunogen Information

#### Gene ID

10082

#### Swiss Prot

Q9Y625

#### Immunogen

Recombinant fusion protein containing a sequence corresponding to amino acids 320-530 of human GPC6 (NP\_005699.1).

#### Synonyms

OMIMD1; GPC6

### Contact



[www.abclonal.com](http://www.abclonal.com)

### Product Information

#### Source

Rabbit

#### Isotype

IgG

#### Purification

Affinity purification

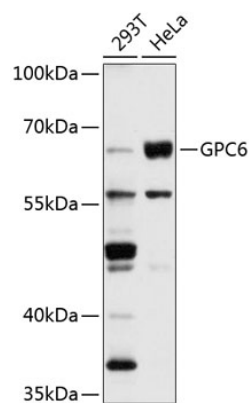
#### Storage

Store at -20°C. Avoid freeze / thaw cycles.

Buffer: PBS with 0.02% sodium azide, 50% glycerol, pH 7.3.

## Validation Data

---



Western blot analysis of extracts of various cell lines, using GPC6 antibody (A2741) at 1:1000 dilution.  
Secondary antibody: HRP Goat Anti-Rabbit IgG (H+L) (A5014) at 1:10000 dilution.  
Lysates/proteins: 25µg per lane.  
Blocking buffer: 3% nonfat dry milk in TBST.  
Detection: ECL Basic Kit (RM00020).  
Exposure time: 10s.