

A2713

Leader in Biomolecular Solutions for Life Science



CLEC4A Rabbit pAb

Catalog No.: A2713

Basic Information

Observed MW

25kDa

Calculated MW

28kDa

Category

Polyclonal Antibody

Applications

WB, ELISA

Cross-Reactivity

Human, Mouse

Background

This gene encodes a member of the C-type lectin/C-type lectin-like domain (CTL/CTLD) superfamily. Members of this family share a common protein fold and have diverse functions, such as cell adhesion, cell-cell signalling, glycoprotein turnover, and roles in inflammation and immune response. The encoded type 2 transmembrane protein may play a role in inflammatory and immune response. Multiple transcript variants encoding distinct isoforms have been identified for this gene. This gene is closely linked to other CTL/CTLD superfamily members on chromosome 12p13 in the natural killer gene complex region.

Recommended Dilutions

WB 1:500 - 1:2000

Immunogen Information

Gene ID

50856

Swiss Prot

Q9UMR7

Immunogen

A synthetic peptide corresponding to a sequence within amino acids 1-100 of human CLEC4A (Q9UMR7).

Synonyms

DCIR; LLIR; CD367; DDB27; hDCIR; CLECSF6; HDCGC13P; CLEC4A

Contact



www.abclonal.com

Product Information

Source

Rabbit

Isotype

IgG

Purification

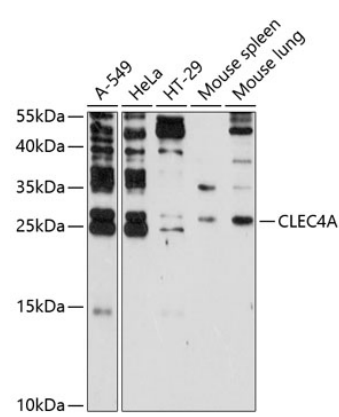
Affinity purification

Storage

Store at -20°C. Avoid freeze / thaw cycles.

Buffer: PBS with 0.01% thimerosal, 50% glycerol, pH7.3.

Validation Data



Western blot analysis of various lysates using CLEC4A Rabbit pAb (A2713) at 1:3000 dilution. Secondary antibody: HRP Goat Anti-Rabbit IgG (H+L) (A5014) at 1:10000 dilution. Lysates/proteins: 25µg per lane. Blocking buffer: 3% nonfat dry milk in TBST. Detection: ECL Enhanced Kit (RM00021). Exposure time: 90s.