

A2686

Leader in Biomolecular Solutions for Life Science



CDK20 Rabbit pAb

Catalog No.: A2686

Basic Information

Observed MW

Calculated MW
39kDa

Category
Polyclonal Antibody

Applications
IHC-P, ELISA

Cross-Reactivity
Rat

Background

The protein encoded by this gene contains a kinase domain most closely related to the cyclin-dependent protein kinases. The encoded kinase may activate cyclin-dependent kinase 2 and is involved in cell growth. Alternatively spliced transcript variants encoding distinct isoforms have been reported.

Recommended Dilutions

IHC-P 1:50 - 1:100

Immunogen Information

Gene ID	Swiss Prot
23552	Q8IZL9

Immunogen

A synthetic peptide corresponding to a sequence within amino acids 200-300 of human CDK20 (Q8IZL9).

Synonyms

P42; CCRK; CDCH; PNQALRE; CDK20

Contact



www.abclonal.com

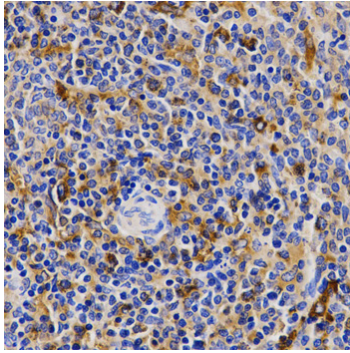
Product Information

Source	Isotype	Purification
Rabbit	IgG	Affinity purification

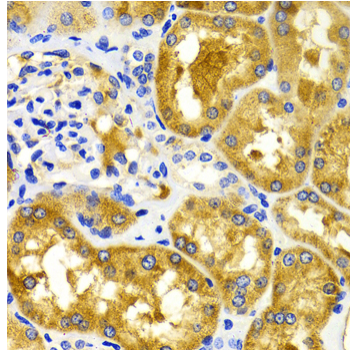
Storage

Store at -20°C. Avoid freeze / thaw cycles.
Buffer: PBS with 0.02% sodium azide, 50% glycerol, pH 7.3.

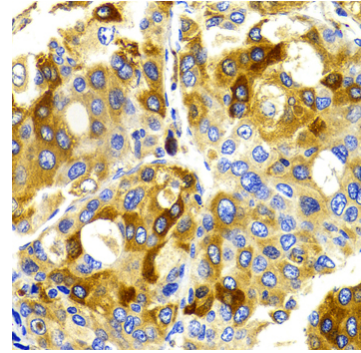
Validation Data



Immunohistochemistry analysis of paraffin-embedded rat spleen using CDK20 antibody (A2686) at dilution of 1:200 (40x lens). Perform microwave antigen retrieval with 10 mM PBS buffer pH 7.2 before commencing with IHC staining protocol.



Immunohistochemistry analysis of paraffin-embedded human kidney using CDK20 antibody (A2686) at dilution of 1:100 (40x lens). Perform microwave antigen retrieval with 10 mM PBS buffer pH 7.2 before commencing with IHC staining protocol.



Immunohistochemistry analysis of paraffin-embedded human liver cancer using CDK20 antibody (A2686) at dilution of 1:100 (40x lens). Perform microwave antigen retrieval with 10 mM PBS buffer pH 7.2 before commencing with IHC staining protocol.