

A2662

Leader in Biomolecular Solutions for Life Science



Cytokeratin 5 (KRT5) Rabbit pAb

Catalog No.: A2662

2 Publications

Basic Information

Observed MW

62kDa

Calculated MW

62kDa

Category

Mouse Monoclonal Antibody

Applications

WB, IHC-P, IF/ICC, IP, ELISA

Cross-Reactivity

Human, Mouse

Background

The protein encoded by this gene is a member of the keratin gene family. The type II cytokeratins consist of basic or neutral proteins which are arranged in pairs of heterotypic keratin chains coexpressed during differentiation of simple and stratified epithelial tissues. This type II cytokeratin is specifically expressed in the basal layer of the epidermis with family member KRT14. Mutations in these genes have been associated with a complex of diseases termed epidermolysis bullosa simplex. The type II cytokeratins are clustered in a region of chromosome 12q12-q13.

Recommended Dilutions

WB	1:500 - 1:1000
IHC-P	1:50 - 1:200
IF/ICC	1:50 - 1:200
IP	0.5µg-4µg antibody for 200µg-400µg extracts of whole cells

Immunogen Information

Gene ID

3852

Swiss Prot

P13647

Immunogen

A synthetic peptide corresponding to a sequence within amino acids 1-100 of human Cytokeratin 5 (KRT5) (NP_000415.2).

Synonyms

K5; CK5; DDD; DDD1; EBS1; EBS2; EBS2A; EBS2B; EBS2C; EBS2D; EBS2E; EBS2F; KRT5A; Cytokeratin 5 (KRT5)

Contact



www.abclonal.com

Product Information

Source

Rabbit

Isotype

IgG

Purification

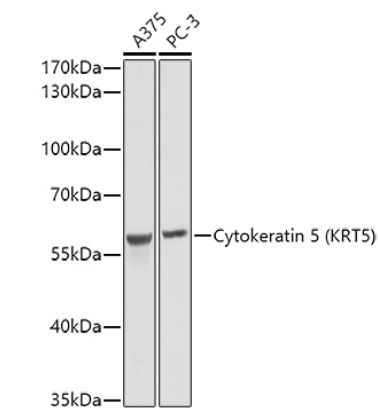
Affinity purification

Storage

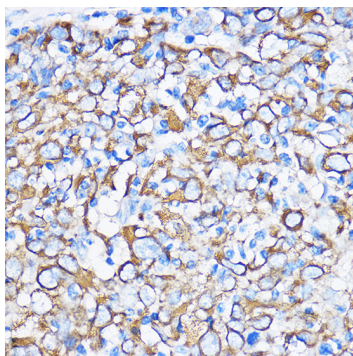
Store at -20°C. Avoid freeze / thaw cycles.

Buffer: PBS with 0.01% thimerosal, 50% glycerol, pH7.3.

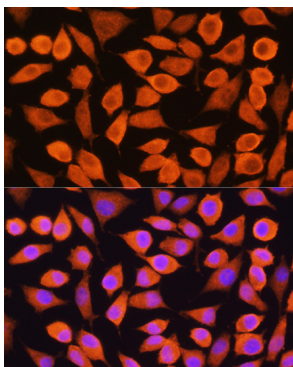
Validation Data



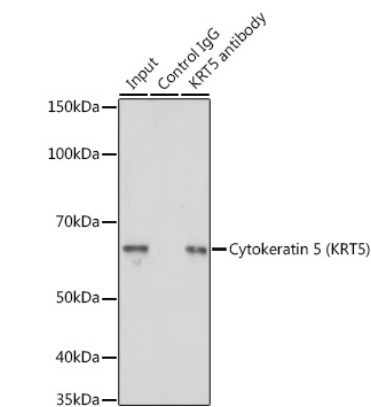
Western blot analysis of various lysates using Cytokeratin 5 (KRT5) Rabbit pAb (A2662) at 1:1000 dilution. Secondary antibody: HRP Goat Anti-Rabbit IgG (H+L) (AS014) at 1:10000 dilution. Lysates/proteins: 25µg per lane. Blocking buffer: 3% nonfat dry milk in TBST. Detection: ECL Basic Kit (RM00020). Exposure time: 1s.



Immunohistochemistry analysis of Cytokeratin 5 (KRT5) in paraffin-embedded Human esophageal cancer using Cytokeratin 5 (Cytokeratin 5 (KRT5)) Rabbit pAb (A2662) at dilution of 1:100 (40x lens). Perform microwave antigen retrieval with 10 mM PBS buffer pH 7.2 before commencing with IHC staining protocol.



Immunofluorescence analysis of L929 cells using Cytokeratin 5 (Cytokeratin 5 (KRT5)) Rabbit pAb (A2662) at dilution of 1:100. Secondary antibody: Cy3 Goat Anti-Rabbit IgG (H+L) (AS007) at 1:500 dilution. Blue: DAPI for nuclear staining.



Immunoprecipitation analysis of 200 µg extracts of A-431 cells using 3 µg Cytokeratin 5 (Cytokeratin 5 (KRT5)) antibody (A2662). Western blot was performed from the immunoprecipitate using Cytokeratin 5 (Cytokeratin 5 (KRT5)) antibody (A2662) at a dilution of 1:5000.