

Occludin Rabbit pAb

Catalog No.	A2601	Category	Polyclonal Antibodies
Applications	WB, IHC, IF	Observed MW	59kDa
Cross-reactivity	Human, Mouse, Rat	Calculated MW	8kDa/23kDa/31kDa/52kDa/54kDa/59kDa

Immunogen Information

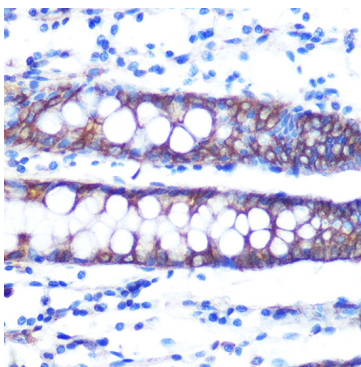
Immunogen	Recombinant fusion protein containing a sequence corresponding to amino acids 263-522 of human Occludin (NP_002529.1).
Gene ID	100506658
Swiss prot	Q16625
Synonyms	OCLN;BLCPMG;PPP1R115;PTORCH1;occludin;Occludin

Product information

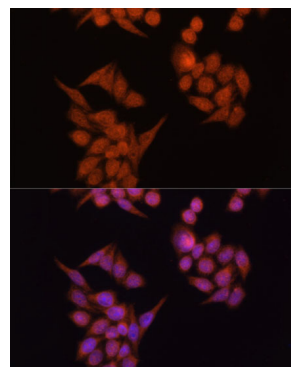
Source	Rabbit
Isotype	IgG
Purification method	Affinity purification
Storage	Store at -20°C. Avoid freeze / thaw cycles. Buffer: PBS with 0.02% sodium azide, 50% glycerol, pH7.3.

Background

This gene encodes an integral membrane protein that is required for cytokine-induced regulation of the tight junction paracellular permeability barrier. Mutations in this gene are thought to be a cause of band-like calcification with simplified gyration and polymicrogyria (BLC-PMG), an autosomal recessive neurologic disorder that is also known as pseudo-TORCH syndrome. Alternative splicing results in multiple transcript variants. A related pseudogene is present 1.5 Mb downstream on the q arm of chromosome 5.



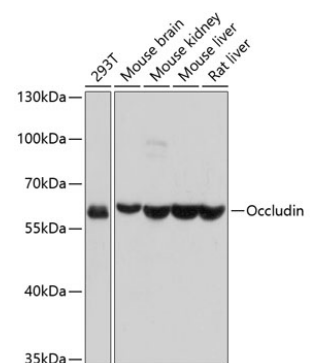
Immunohistochemistry of paraffin-embedded human colon using Occludin Rabbit pAb (A2601) at dilution of 1:100 (40x lens).



Immunofluorescence analysis of HeLa cells using Occludin antibody (A2601) at dilution of 1:100. Blue: DAPI for nuclear staining.

Recommended Dilutions

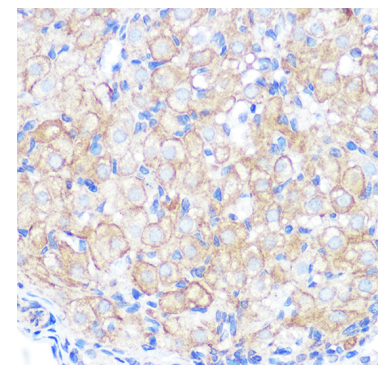
WB	1:1000 - 1:2000
IHC	1:50 - 1:200
IF	1:50 - 1:200



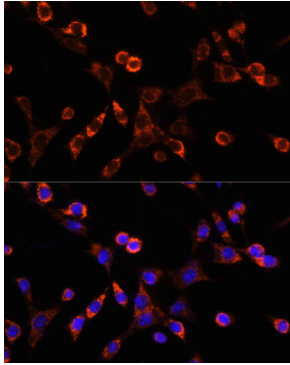
Western blot analysis of extracts of various cell lines, using Occludin antibody (A2601) at 1:1000 dilution. Secondary antibody: HRP Goat Anti-Rabbit IgG (H+L) (AS014) at 1:10000 dilution.

Lysates/proteins: 25ug per lane. Blocking buffer: 3% nonfat dry milk in TBST.

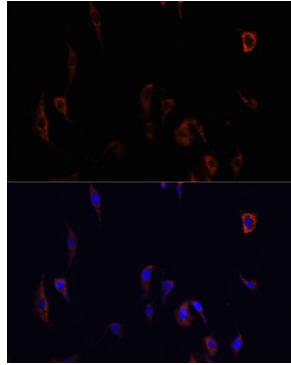
Detection: ECL Basic Kit (RM00020). Exposure time: 1s.



Immunohistochemistry of paraffin-embedded rat ovary using Occludin Rabbit pAb (A2601) at dilution of 1:100 (40x lens).



Immunofluorescence analysis of NIH/3T3 cells using Occludin antibody (A2601) at dilution of 1:100. Blue: DAPI for nuclear staining.



Immunofluorescence analysis of PC12 cells using Occludin antibody (A2601) at dilution of 1:100. Blue: DAPI for nuclear staining.