

A2562

Leader in Biomolecular Solutions for Life Science



## DKK1 Rabbit pAb

Catalog No.: A2562

1 Publications

### Basic Information

#### Observed MW

28-45kDa

#### Calculated MW

29kDa

#### Category

Polyclonal Antibody

#### Applications

WB, ELISA

#### Cross-Reactivity

Human, Mouse, Rat

### Background

This gene encodes a member of the dickkopf family of proteins. Members of this family are secreted proteins characterized by two cysteine-rich domains that mediate protein-protein interactions. The encoded protein binds to the LRP6 co-receptor and inhibits beta-catenin-dependent Wnt signaling. This gene plays a role in embryonic development and may be important in bone formation in adults. Elevated expression of this gene has been observed in numerous human cancers and this protein may promote proliferation, invasion and growth in cancer cell lines.

### Recommended Dilutions

WB 1:500 - 1:1000

### Immunogen Information

#### Gene ID

22943

#### Swiss Prot

O94907

#### Immunogen

Recombinant fusion protein containing a sequence corresponding to amino acids 32-266 of human DKK1 (NP\_036374.1).

#### Synonyms

SK; DKK-1; DKK1

### Contact



[www.abclonal.com](http://www.abclonal.com)

### Product Information

#### Source

Rabbit

#### Isotype

IgG

#### Purification

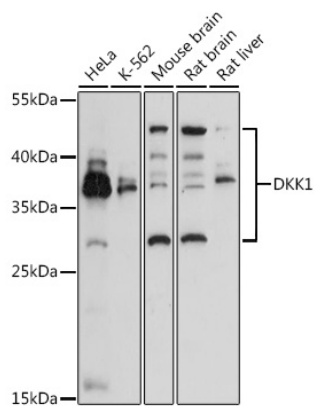
Affinity purification

#### Storage

Store at -20°C. Avoid freeze / thaw cycles.

Buffer: PBS with 0.05% proclin300, 50% glycerol, pH7.3.

Validation Data



Western blot analysis of various lysates using DKK1 Rabbit pAb (A2562) at 1:3000 dilution.  
Secondary antibody: HRP Goat Anti-Rabbit IgG (H+L) (AS014) at 1:10000 dilution.  
Lysates/proteins: 25µg per lane.  
Blocking buffer: 3% nonfat dry milk in TBST.  
Detection: ECL Basic Kit (RM00020).  
Exposure time: 90s.