

A2544

Leader in Biomolecular Solutions for Life Science



CYP3A4 Rabbit pAb

Catalog No.: A2544

11 Publications

Basic Information

Observed MW

50kDa

Calculated MW

57kDa

Category

Polyclonal Antibody

Applications

WB, IHC-P, IF/ICC, ELISA

Cross-Reactivity

Human, Mouse, Rat

Background

This gene encodes a member of the cytochrome P450 superfamily of enzymes. The cytochrome P450 proteins are monooxygenases that catalyze many reactions involved in drug metabolism and synthesis of cholesterol, steroids and other lipids. This protein localizes to the endoplasmic reticulum and its expression is induced by glucocorticoids and some pharmacological agents. This enzyme is involved in the metabolism of approximately half the drugs in use today, including acetaminophen, codeine, cyclosporin A, diazepam, erythromycin, and chloroquine. The enzyme also metabolizes some steroids and carcinogens. This gene is part of a cluster of cytochrome P450 genes on chromosome 7q21.1. Previously another CYP3A gene, CYP3A3, was thought to exist; however, it is now thought that this sequence represents a transcript variant of CYP3A4. Alternatively spliced transcript variants encoding different isoforms have been identified.

Recommended Dilutions

WB	1:500 - 1:1000
IHC-P	1:20 - 1:50
IF/ICC	1:50 - 1:100

Immunogen Information

Gene ID

1576

Swiss Prot

P08684

Immunogen

Recombinant fusion protein containing a sequence corresponding to amino acids 244-503 of human CYP3A4 (NP_059488.2).

Synonyms

HLP; CP33; CP34; CYP3A; NF-25; VDDR3; CYP3A3; P450C3; CYP3A3; CYP3A4; P450PCN1; CYP3A4

Contact



www.abclonal.com

Product Information

Source

Rabbit

Isotype

IgG

Purification

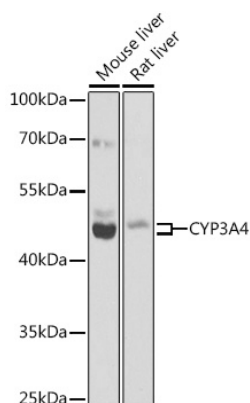
Affinity purification

Storage

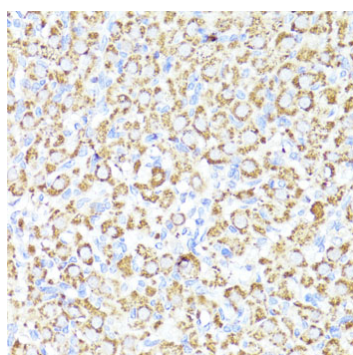
Store at -20°C. Avoid freeze / thaw cycles.

Buffer: PBS with 0.02% sodium azide, 50% glycerol, pH 7.3.

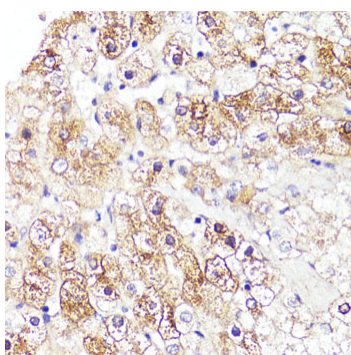
Validation Data



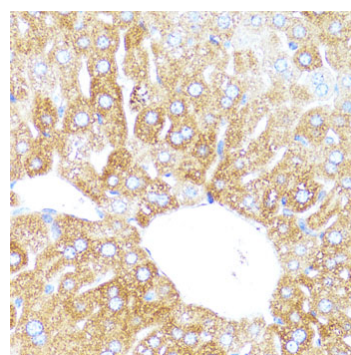
Western blot analysis of various lysates using CYP3A4 Rabbit pAb (A2544) at 1:1000 dilution.
 Secondary antibody: HRP Goat Anti-Rabbit IgG (H+L) (A5014) at 1:10000 dilution.
 Lysates/proteins: 25µg per lane.
 Blocking buffer: 3% nonfat dry milk in TBST.
 Detection: ECL Basic Kit (RM00020).
 Exposure time: 15s.



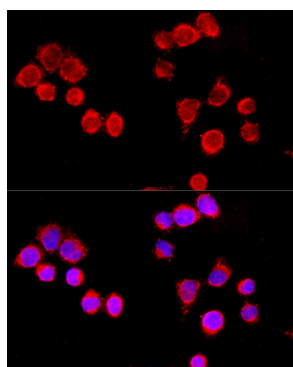
Immunohistochemistry analysis of CYP3A4 in paraffin-embedded rat ovary using CYP3A4 Rabbit pAb (A2544) at dilution of 1:100 (40x lens). Perform microwave antigen retrieval with 10 mM PBS buffer pH 7.2 before commencing with IHC staining protocol.



Immunohistochemistry analysis of CYP3A4 in paraffin-embedded human liver using CYP3A4 Rabbit pAb (A2544) at dilution of 1:100 (40x lens). Perform microwave antigen retrieval with 10 mM PBS buffer pH 7.2 before commencing with IHC staining protocol.



Immunohistochemistry analysis of CYP3A4 in paraffin-embedded mouse liver using CYP3A4 Rabbit pAb (A2544) at dilution of 1:100 (40x lens). Perform microwave antigen retrieval with 10 mM PBS buffer pH 7.2 before commencing with IHC staining protocol.



Immunofluorescence analysis of HeLa cells using CYP3A4 Rabbit pAb (A2544) at dilution of 1:100 (40x lens). Secondary antibody: Cy3 Goat Anti-Rabbit IgG (H+L) (A5007) at 1:500 dilution. Blue: DAPI for nuclear staining.