

Integrin beta 3 (ITGB3/CD61) Rabbit pAb

Catalog No.: A2542 **5 Publications**

Basic Information

Observed MW

100kDa

Calculated MW

87kDa

Category

Primary antibody

Applications

ELISA, WB, IHC-P

Cross-Reactivity

Human, Mouse, Rat

Background

The ITGB3 protein product is the integrin beta chain beta 3. Integrins are integral cell-surface proteins composed of an alpha chain and a beta chain. A given chain may combine with multiple partners resulting in different integrins. Integrin beta 3 is found along with the alpha IIb chain in platelets. Integrins are known to participate in cell adhesion as well as cell-surface mediated signalling.

Recommended Dilutions

WB	1:500 - 1:1000
IHC-P	1:50 - 1:200

Immunogen Information

Gene ID

3690

Swiss Prot

P05106

Immunogen

Recombinant fusion protein containing a sequence corresponding to amino acids 80-430 of human Integrin beta 3 (ITGB3/CD61) (NP_000203.2).

Synonyms

GT; GT2; CD61; GP3A; BDPLT2; GPIIIa; BDPLT16; BDPLT24; Integrin beta 3 (ITGB3/CD61)

Contact

 | www.abclonal.com

Product Information

Source

Rabbit

Isotype

IgG

Purification

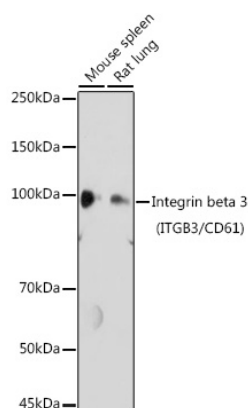
Affinity purification

Storage

Store at -20°C. Avoid freeze / thaw cycles.

Buffer: PBS with 0.02% sodium azide, 50% glycerol, pH7.3.

Validation Data



Western blot analysis of extracts of various cell lines, using Integrin beta 3 (ITGB3/CD61) antibody (A2542) at 1:1000 dilution.

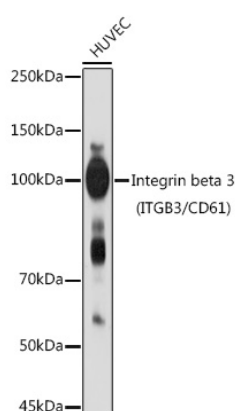
Secondary antibody: HRP Goat Anti-Rabbit IgG (H+L) (A5014) at 1:10000 dilution.

Lysates/proteins: 25µg per lane.

Blocking buffer: 3% nonfat dry milk in TBST.

Detection: ECL Basic Kit (RM00020).

Exposure time: 180s.



Western blot analysis of extracts of HUVEC cells, using Integrin beta 3 (ITGB3/CD61) antibody (A2542) at 1:1000 dilution.

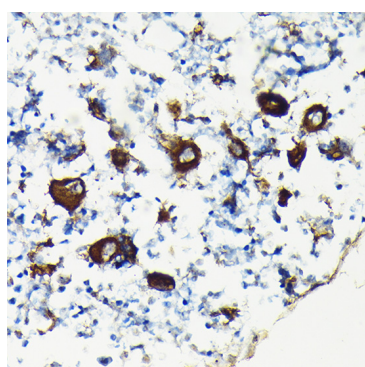
Secondary antibody: HRP Goat Anti-Rabbit IgG (H+L) (A5014) at 1:10000 dilution.

Lysates/proteins: 25µg per lane.

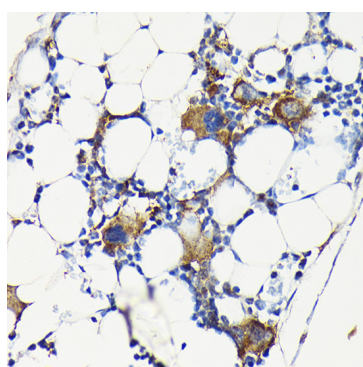
Blocking buffer: 3% nonfat dry milk in TBST.

Detection: ECL Basic Kit (RM00020).

Exposure time: 90s.



Immunohistochemistry analysis of paraffin-embedded rat bone marrow using Integrin beta 3 (ITGB3/CD61) Rabbit pAb (A2542) at dilution of 1:100 (40x lens). Perform high pressure antigen retrieval with 10 mM citrate buffer pH 6.0 before commencing with IHC staining protocol.



Immunohistochemistry analysis of paraffin-embedded mouse bone marrow using Integrin beta 3 (ITGB3/CD61) Rabbit pAb (A2542) at dilution of 1:100 (40x lens). Perform high pressure antigen retrieval with 10 mM citrate buffer pH 6.0 before commencing with IHC staining protocol.