

A25378

Leader in Biomolecular Solutions for Life Science



## ABflo® 647 Rabbit anti-Mouse CD105/Endoglin mAb

Catalog No.: A25378

### Basic Information

#### Observed MW

**Calculated MW**  
70kDa

#### Category

SMab Recombinant Monoclonal Antibody

#### Applications

FC

#### Cross-Reactivity

Mouse

#### CloneNo number

ARC66234-ABflo647

#### Conjugate

ABflo® 647. Ex:648nm. Em:664nm.

### Background

Enables protein homodimerization activity and transforming growth factor beta binding activity. Involved in several processes, including circulatory system development; positive regulation of cell differentiation; and regulation of gene expression. Acts upstream of or within circulatory system development and positive regulation of angiogenesis. Located in endothelial microparticle. Is expressed in several structures, including brain; cardiovascular system; extraembryonic vascular system; and lung. Used to study arteriovenous malformations of the brain and hereditary hemorrhagic telangiectasia. Human ortholog(s) of this gene implicated in arteriovenous malformation; arteriovenous malformations of the brain; breast cancer; hereditary hemorrhagic telangiectasia; and intracranial aneurysm. Orthologous to human ENG (endoglin).

### Recommended Dilutions

FC                      5 µl per 10<sup>6</sup> cells in  
                                 100 µl volume

### Immunogen Information

**Gene ID**  
13805

**Swiss Prot**  
Q63961

#### Immunogen

Recombinant fusion protein containing a sequence corresponding to amino acids 27-581 of mouse CD105 (NP\_031958.2).

#### Synonyms

Endo; CD105; S-endoglin

### Contact



[www.abclonal.com](http://www.abclonal.com)

### Product Information

**Source**  
Rabbit

**Isotype**  
IgG

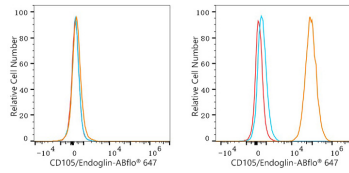
**Purification**  
Affinity purification

#### Storage

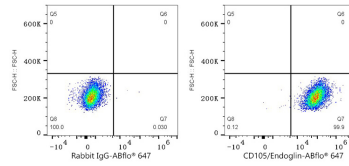
Store at 2-8°C. Avoid freeze.

Buffer: PBS with 0.03% proclin300,0.2% BSA,pH7.3.

## Validation Data



Flow cytometry:  $1 \times 10^6$  NIH/3T3 cells (negative control, left) and bEnd.3 cells (right) were surface-stained with ABflo® 647 Rabbit anti-Mouse CD105/Endoglin mAb (A25378, 5  $\mu$ l/Test, orange line) or ABflo® 647 Rabbit IgG isotype control (A22070, 5  $\mu$ l/Test, blue line). Non-fluorescently stained cells were used as blank control (red line).



Flow cytometry:  $1 \times 10^6$  bEnd.3 cells were surface-stained with ABflo® 647 Rabbit IgG isotype control (A22070, 5  $\mu$ l/Test, left) or ABflo® 647 Rabbit anti-Mouse CD105/Endoglin mAb (A25378, 5  $\mu$ l/Test, right).